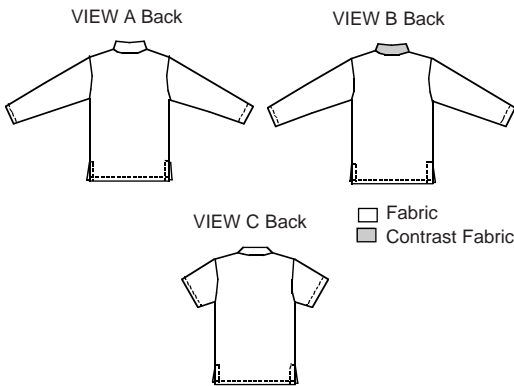


Misses' pull-over tops have extended shoulders and side hemline slits. View A has contrast front inset, zipper on yoke and collar, long sleeves, and contrast inside collar and yoke facings. View B has contrast yoke and outside collar, zipper on yoke and collar, and long sleeves. View C has contrast front inset, short sleeves, yoke with button closure, and collar.



KWIK•SEW®
2595 price

KWIK & EASY

MISSES' TOPS DESIGNED FOR STRETCH KNITS ONLY
 Suggested Fabrics: Sweatshirt fleece, double knit, textured knits, French terry, single knit, golf knit. Contrast II also in woven fabrics
 Sizes: XS-S-M-L-XL

Size	XS	S	M	L	XL	
Finished Length at Center Back						
View A, B or C	28 (72)	29 (74)	30 (76)	31 (79)	32 (82)	" (cm)
Material Required: Fabric requirement allows for nap, one-way design or shading. Extra fabric may be needed to match design or for shrinkage.						
Fabric 60" (152 cm) Wide						
View A Fabric	1 5/8 (1.50)	1 5/8 (1.50)	1 5/8 (1.50)	1 3/4 (1.60)	1 3/4 (1.60)	yd (m)
Contrast I (inset)	1/4 (0.25)	1/4 (0.25)	1/4 (0.25)	1/4 (0.25)	1/4 (0.25)	yd (m)
Contrast II (facing)	3/8 (0.35)	3/8 (0.35)	3/8 (0.35)	3/8 (0.35)	3/8 (0.35)	yd (m)
View B Fabric	1 5/8 (1.50)	1 5/8 (1.50)	1 5/8 (1.50)	1 3/4 (1.60)	1 3/4 (1.60)	yd (m)
Contrast I (yoke)	3/8 (0.35)	3/8 (0.35)	3/8 (0.35)	3/8 (0.35)	3/8 (0.35)	yd (m)
View C Fabric	1 1/4 (1.15)	1 1/4 (1.15)	1 5/8 (1.50)	1 3/4 (1.60)	1 3/4 (1.60)	yd (m)
Contrast I (inset)	1/4 (0.25)	1/4 (0.25)	1/4 (0.25)	1/4 (0.25)	1/4 (0.25)	yd (m)
Fusible Interfacing 22" (56 cm) Wide						
View C	5/8 (0.60)	5/8 (0.60)	3/4 (0.70)	3/4 (0.70)	3/4 (0.70)	yd (m)

Notions: Thread. VIEW A or B: One 9" (23 cm) zipper, scrap piece of fusible interfacing. VIEW C: Three 5/8" (15 mm) buttons.