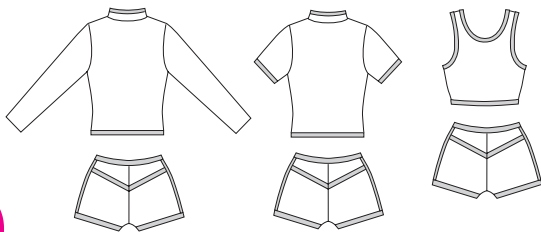


Misses' swimsuits have bindings from contrast fabric. Shorts have back yoke, lined crotch, leg openings and waist are finished with elastic and contrast binding. Side and yoke seams are covered with contrast binding. View A and B jackets have princess line front, collar, zipper opening on front, outside edges of collar, front edges and bottom edge are finished with contrast bindings. View A has long sleeves. View B has short sleeves finished with contrast bindings. View C cropped pullover top has princess line front, neckline and armholes are finished with elastic and contrast bindings. Bottom edge is finished with contrast binding.

VIEW A Back

VIEW B Back

VIEW C Back



□ Fabric  
■ Contrast Fabric

**KWIK•SEW®**  
**2600** price

**MISSES' SWIMSUITS** DESIGNED FOR TWO-WAY STRETCH FABRICS WITH 75% STRETCH  
Sizes: XS-S-M-L-XL Suggested Fabrics: Swimsuit fabric, fabric with spandex or Lycra®

Size	XS	S	M	L	XL	
<b>Finished Length of Top from Natural Neckline</b>						
View A & B	18 (46)	18 (46)	18 (46)	20 (51)	20 (51)	" (cm)
View C	13 1/2 (34)	14 (35)	14 1/2 (37)	15 1/4 (39)	16 1/2 (42)	" (cm)
<b>Material Required:</b> Fabric requirement allows for nap, one-way design or shading. Extra fabric may be needed to match design or for shrinkage.						
<b>Fabric 60" (152 cm) Wide</b>						
View A Fabric	1 (0.95)	1 1/8 (1.05)	1 1/8 (1.05)	1 1/4 (1.15)	1 3/8 (1.30)	yd (m)
Contrast Fabric	1/4 (0.25)	1/4 (0.25)	1/4 (0.25)	1/4 (0.25)	1/4 (0.25)	yd (m)
View B Fabric	1 (0.95)	1 (0.95)	1 (0.95)	1 1/8 (1.05)	1 1/8 (1.05)	yd (m)
Contrast Fabric	3/8 (0.35)	3/8 (0.35)	3/8 (0.35)	3/8 (0.35)	3/8 (0.35)	yd (m)
View C Fabric	3/4 (0.70)	3/4 (0.70)	7/8 (0.80)	7/8 (0.80)	7/8 (0.80)	yd (m)
Contrast Fabric	3/8 (0.35)	3/8 (0.35)	3/8 (0.35)	3/8 (0.35)	3/8 (0.35)	yd (m)
<b>Fabric 45" (115 cm) Wide</b>						
View A Fabric	1 1/2 (1.40)	1 1/2 (1.40)	1 5/8 (1.50)	1 5/8 (1.50)	1 3/4 (1.60)	yd (m)
Contrast Fabric	1 3/8 (1.30)	1 1/2 (1.40)	1 1/2 (1.40)	1 5/8 (1.50)	1 5/8 (1.50)	yd (m)
View B Fabric	1 1/8 (1.05)	1 1/4 (1.15)	1 3/8 (1.30)	1 3/8 (1.30)	1 1/2 (1.40)	yd (m)
Contrast Fabric	1 3/8 (1.30)	1 1/2 (1.40)	1 1/2 (1.40)	1 5/8 (1.50)	1 5/8 (1.50)	yd (m)
View C Fabric	7/8 (0.80)	1 (0.95)	1 (0.95)	1 1/8 (1.05)	1 1/8 (1.05)	yd (m)
Contrast Fabric	3/8 (0.35)	3/8 (0.35)	1 1/8 (1.05)	1 1/8 (1.05)	1 1/8 (1.05)	yd (m)
<b>Lining 60" (152 cm) or 45" (115 cm) Wide with Greatest Degree of Stretch on Lengthwise Grain</b>						
View A, B or C	3/8 (0.35)	3/8 (0.35)	3/8 (0.35)	3/8 (0.35)	3/8 (0.35)	yd (m)
<b>Notions:</b> Thread. VIEW A & B: 3/8" (1 cm) wide elastic-2 yd (1.85 m) for sizes XS-S; 2 3/8 yd (2.20 m) for sizes M-L-XL, one separating zipper-16" (40 cm) for sizes XS-S-M; 18" (45 cm) for sizes L-XL. VIEW C: 3/8" (1 cm) wide elastic-4 yd (3.70 m) for sizes XS-S; 4 1/2 yd (4.15 m) for sizes M-L; 5 yd (4.60 m) for size XL.						

ACTIVE & SWIMWEAR