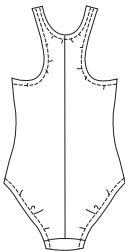


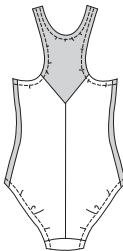


Girls' swimsuits have racing backs and all outside edges finished with elastic. View B has front side panels and upper back from contrast fabric.

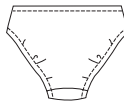
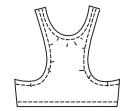
VIEW A Back



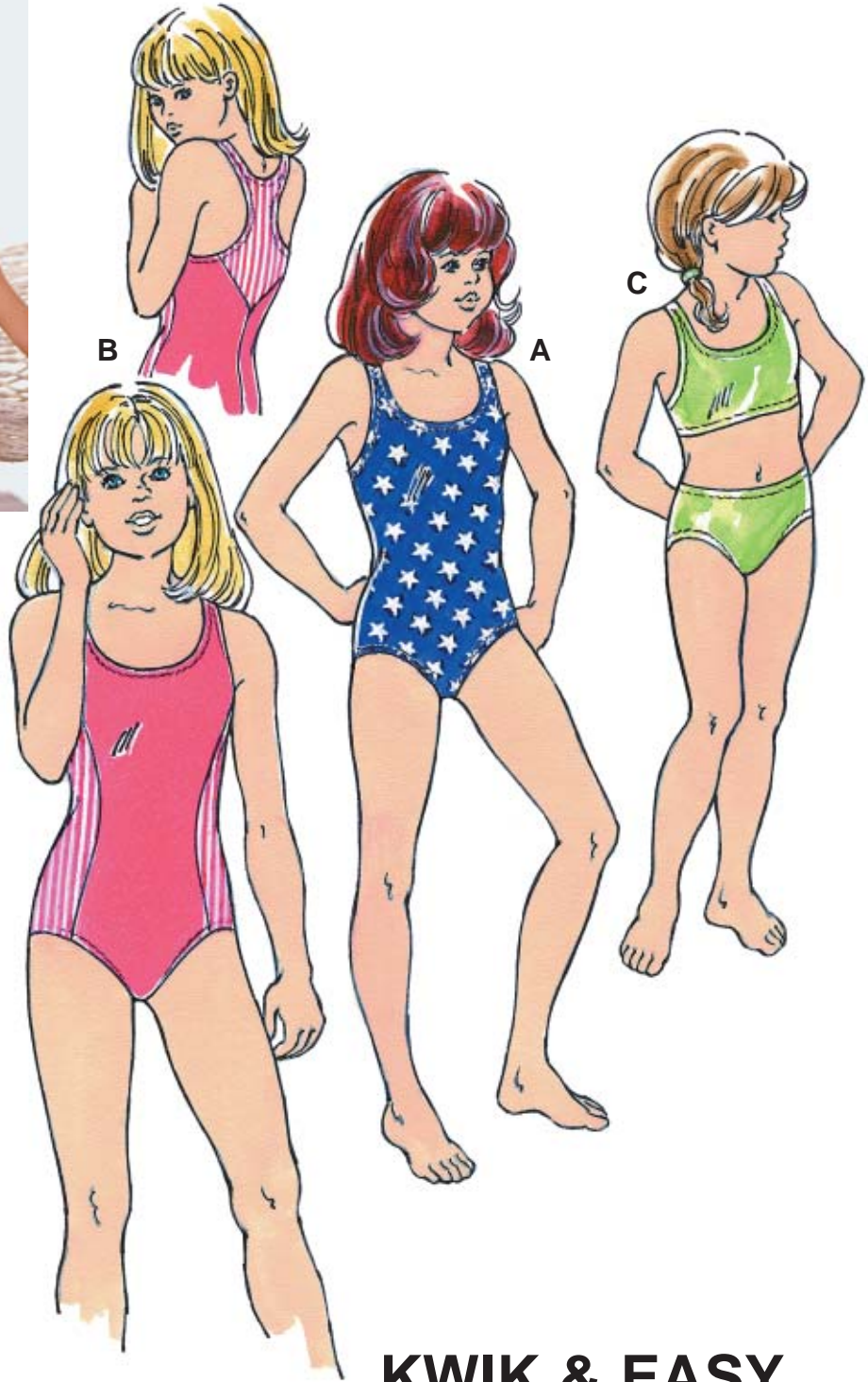
VIEW B Back



VIEW C Back



□ Fabric
■ Contrast Fabric



KWIK•SEW®
2605
2606 price

KWIK & EASY

GIRLS' SWIMSUITS

2605 Sizes: 4-5-6-7

2606 Sizes: 8-10-12-14

DESIGNED FOR TWO-WAY STRETCH FABRIC WITH 75% STRETCH

Suggested Fabrics: Swimsuit fabric with Lycra® spandex

Size	4	5	6	7	8	10	12	14	
Material Required: Fabric requirement allows for nap, one-way design or shading. Extra fabric may be needed to match design or for shrinkage.									
Fabric 60" (152 cm) Wide									
View A or B	1/2 (0.50)	1/2 (0.50)	1/2 (0.50)	1/2 (0.50)	1/2 (0.50)	1/2 (0.50)	5/8 (0.60)	5/8 (0.60)	yd (m)
View B Contrast	3/8 (0.35)	3/8 (0.35)	3/8 (0.35)	3/8 (0.35)	3/8 (0.35)	3/8 (0.35)	3/8 (0.35)	3/8 (0.35)	yd (m)
View C	1/2 (0.50)	1/2 (0.50)	1/2 (0.50)	1/2 (0.50)	1/2 (0.50)	1/2 (0.50)	1/2 (0.50)	1/2 (0.50)	yd (m)
Fabric 45" (115 cm) Wide									
View A	1/2 (0.50)	1/2 (0.50)	1/2 (0.50)	1/2 (0.50)	1/2 (0.50)	1/2 (0.50)	3/4 (0.70)	7/8 (0.80)	yd (m)
View B	1/2 (0.50)	1/2 (0.50)	1/2 (0.50)	1/2 (0.50)	1/2 (0.50)	1/2 (0.50)	5/8 (0.60)	5/8 (0.60)	yd (m)
View B Contrast	3/8 (0.35)	3/8 (0.35)	3/8 (0.35)	3/8 (0.35)	3/8 (0.35)	3/8 (0.35)	3/8 (0.35)	3/8 (0.35)	yd (m)
View C	1/2 (0.50)	1/2 (0.50)	1/2 (0.50)	1/2 (0.50)	1/2 (0.50)	3/4 (0.70)	3/4 (0.70)	3/4 (0.70)	yd (m)
Notions: Thread. VIEW A, B or C: Piece of swimsuit lining 7" x 7" (18 cm x 18 cm) for sizes 4-7; 8" x 8" (20 cm x 20 cm) for sizes 8-14 for crotch lining. VIEW A or B: 3/8" (1 cm) wide swimsuit elastic - 2 1/4 yd (2.10 m) for sizes 4-5; 2 1/2 yd (2.30 m) for sizes 6-7; 2 3/4 yd (2.55 m) for sizes 8-10; 3 yd (2.75 m) for sizes 12-14. VIEW C: 3/8" (1 cm) wide swimsuit elastic - 3 3/8 yd (3.10 m) for sizes 4-5; 3 5/8 yd (3.35 m) for sizes 6-7; 4 yd (3.70 m) for sizes 8-10; 4 3/8 yd (4 m) for sizes 12-14.									