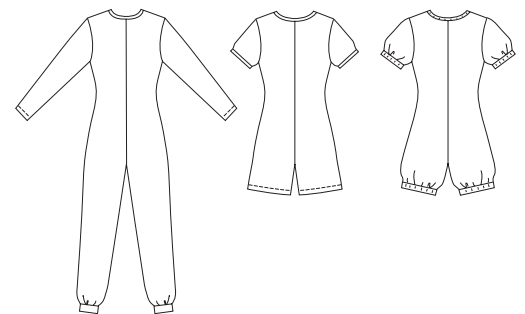




Misses' rompers have front placket with buttons or snaps. View A has leg cuffs, long sleeves, and neckline finished with self fabric binding. View B has scoop neckline finished with self fabric binding, short sleeves with binding, and hemmed short legs. View C has scoop neckline finished with binding from ribbing, short sleeves with ribbing bands, and leg bands from ribbing.

VIEW A Back VIEW B Back VIEW C Back



KWIK•SEW®
price **2611**

DESIGNED FOR STRETCH KNITS ONLY WITH 25% STRETCH
Suggested Fabrics: Interlock, textured knits, thermal knits, stretch terry

MISSSES' SLEEPWEAR
Sizes: XS-S-M-L-XL

Size	XS	S	M	L	XL	
Finished Inside Leg Seam						
View A	29 (74)	29 (74)	29 (74)	29 (74)	29 (74)	" (cm)
View B	4 1/2 (11)	4 1/2 (11)	4 1/2 (11)	4 1/2 (11)	4 1/2 (11)	" (cm)
View C	3 (7)	3 (7)	3 (7)	3 (7)	3 (7)	" (cm)
Material Required:	Fabric requirement allows for nap, one-way design or shading. Extra fabric may be needed to match design or for shrinkage.					
Fabric 60" (152 cm) Wide						
View A	2 3/8 (2.20)	2 3/8 (2.20)	2 1/2 (2.30)	2 5/8 (2.40)	3 1/4 (3.00)	yd (m)
View B	1 1/4 (1.15)	1 1/4 (1.15)	1 3/8 (1.30)	1 1/2 (1.40)	1 1/2 (1.40)	yd (m)
View C	1 1/4 (1.15)	1 1/4 (1.15)	1 1/4 (1.15)	1 3/8 (1.30)	1 1/2 (1.40)	yd (m)
Ribbing 28" (71 cm) Wide						
View C	13 (33)	13 (33)	13 (33)	13 (33)	13 (33)	" (cm)
Fusible Interfacing 22" (56 cm) Wide						
View A	3/4 (0.70)	3/4 (0.70)	3/4 (0.70)	3/4 (0.70)	3/4 (0.70)	yd (m)
View B or C	5/8 (0.60)	5/8 (0.60)	3/4 (0.70)	3/4 (0.70)	3/4 (0.70)	yd (m)

Notions: Thread, six 5/8" (15 mm) buttons or snaps.