

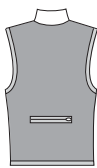


Misses' vests and jacket are close fitting and have lined front and back, forward side seams, forward shoulder seams, stand-up collar, and front zipper with zipper shield. View A has back welt pocket with zipper, and armholes and bottom edge are finished with binding from swimwear fabric. View B short vest has back from contrast fabric, welt pocket with zipper, and armholes and bottom edge are finished with binding from swimwear fabric. View C short jacket has bottom edge and sleeves finished with binding from swimwear fabric.



VIEW A Back

VIEW B Back



□ Fabric  
■ Contrast Fabric

VIEW C Back



**KWIK•SEW®**  
**2615** price

**MISSES' VESTS & JACKET**  
Sizes: XS-S-M-L-XL

DESIGNED FOR HEAVYWEIGHT STRETCH KNITS

Suggested Fabrics: Polarfleece®, heavy fleece, blanket fleece

Contrast Fabric for binding in swimwear fabric with spandex Lycra®

Lining in stretch knits only, such as single knit, interlock

Size	XS	S	M	L	XL	
<b>Finished Length at Center Back</b>						
View A	23 (58)	23 1/4 (59)	24 (61)	24 1/2 (62)	25 1/4 (63)	" (cm)
View B & C	18 3/4 (48)	19 1/4 (49)	20 (51)	20 1/2 (52)	21 (53)	" (cm)
<b>Material Required:</b> Fabric requirement allows for nap, one-way design or shading. Extra fabric may be needed to match design or for shrinkage.						
<b>Fabric 60" (152 cm) Wide</b>						
View A Fabric	7/8 (0.80)	7/8 (0.80)	7/8 (0.80)	7/8 (0.80)	1 (0.95)	yd (m)
Lining	7/8 (0.80)	7/8 (0.80)	7/8 (0.80)	7/8 (0.80)	7/8 (0.80)	yd (m)
View B Fabric	5/8 (0.60)	5/8 (0.60)	5/8 (0.60)	5/8 (0.60)	5/8 (0.60)	yd (m)
Contrast Fabric	3/4 (0.70)	3/4 (0.70)	3/4 (0.70)	3/4 (0.70)	3/4 (0.70)	yd (m)
Lining	3/4 (0.70)	3/4 (0.70)	3/4 (0.70)	3/4 (0.70)	3/4 (0.70)	yd (m)
View C Fabric	1 1/4 (1.15)	1 1/4 (1.15)	1 1/4 (1.15)	1 3/8 (1.30)	1 3/8 (1.30)	yd (m)
Lining	3/4 (0.70)	3/4 (0.70)	3/4 (0.70)	3/4 (0.70)	3/4 (0.70)	yd (m)
<b>Swimwear Fabric for Binding 45" (115 cm) or 60" (152 cm) Wide</b>						
View A or B	3/8 (0.35)	3/8 (0.35)	3/8 (0.35)	3/8 (0.35)	3/8 (0.35)	yd (m)
View C	1/4 (0.25)	1/4 (0.25)	1/4 (0.25)	1/4 (0.25)	1/4 (0.25)	yd (m)

**Notions:** Thread. VIEW A: One separating zipper—24" (60 cm) for sizes XS-S-M-L; 26" (65 cm) for size XL, one zipper—6" (15 cm) for sizes XS-S-M; 7" (18 cm) for sizes L-XL, scrap piece of fusible interfacing. VIEW B: One separating zipper—20" (50 cm) for sizes XS-S-M-L; 22" (55 cm) for size XL, one zipper—6" (15 cm) for sizes XS-S-M; 7" (18 cm) for sizes L-XL, scrap piece of fusible interfacing. VIEW C: One separating zipper—20" (50 cm) for sizes XS-S-M-L; 22" (55 cm) for size XL.

NOTE: Purchase suggested length of separating zipper or longer, zipper will be trimmed.