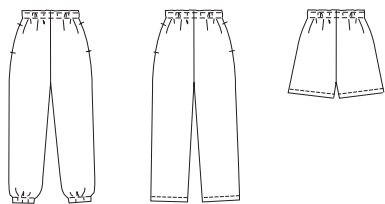


Boys' pull-on sleep pants and shorts have stitched elastic at waist with drawstring. Pants have pockets in outside leg seams. View A has elastic at bottom edge of legs.

VIEW A Back VIEW B Back VIEW C Back



KWIK•SEW®
2617 price

KWIK & EASY

BOYS' SLEEP PANTS & SHORTS

Sizes: XS (4-5), S (6), M (7-8), L (10), XL (12-14)

DESIGNED FOR LIGHTWEIGHT WOVEN FABRICS

Suggested Fabrics: Cotton, cotton types, broadcloth, chambray, flannelette

Size	XS (4-5)	S (6)	M (7-8)	L (10)	XL (12-14)	
Height	42 (107)	46 (117)	50 (127)	55 (140)	60 (152)	" (cm)
Waist	22 (56)	23 (58)	24 (61)	25 (64)	27 (68)	" (cm)
Hip	24 (61)	25 1/2 (65)	27 1/2 (70)	30 (76)	32 (81)	" (cm)
Finished Inside Leg Seam						
View A & B	15 3/4 (40)	18 1/4 (46)	20 3/4 (52)	23 1/4 (59)	26 3/4 (65)	" (cm)
View C	3 (8)	3 1/2 (9)	4 (10)	4 1/2 (11)	5 (13)	" (cm)
Material Required: Fabric requirement allows for nap, one-way design or shading. Extra fabric may be needed to match design or for shrinkage.						
Fabric 60" (152 cm) Wide						
View A & B	7/8 (0.80)	1 (0.95)	1 1/8 (1.05)	1 1/4 (1.15)	1 3/8 (1.30)	yd (m)
View C	1/2 (0.50)	5/8 (0.60)	5/8 (0.60)	5/8 (0.60)	3/4 (0.70)	yd (m)
Fabric 45" (115 cm) Wide						
View A & B	1 1/8 (1.05)	1 1/4 (1.15)	1 5/8 (1.50)	1 7/8 (1.75)	2 1/8 (1.95)	yd (m)
View C	1/2 (0.50)	5/8 (0.60)	3/4 (0.70)	1 (0.95)	1 1/4 (1.15)	yd (m)

Notions: Thread, scrap piece of fusible interfacing, 1 1/2" (4 cm) wide elastic-5/8 yd (0.60 m) for sizes XS-S-M-L; 3/4 yd (0.70 m) for size XL, one drawstring. VIEW A: 5/8 yd (0.60 m) of 3/4" (2 cm) wide elastic for legs.