

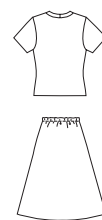
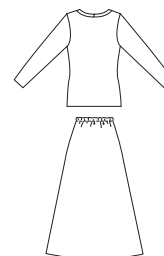
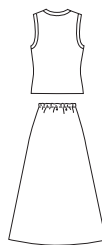
SKIRTS & TOPS

Misses' A-line skirts and close fitting pullover tops. Skirt in two lengths has elastic waist. View A sleeveless top has V-neckline, and neckline and armholes are finished with self fabric bands. View B has long sleeves and scoop neckline finished with self fabric neckband. View C has short sleeves and round neckline finished with self fabric neckband.

VIEW A Back

VIEW B Back

VIEW C Back



KWIK-SEW®

price **2619**

DESIGNED FOR STRETCH KNITS ONLY WITH 35% STRETCH
Suggested Fabrics: Interlock, velour, stretch velvet, stretch terry, fabrics with Lycra® spandex

MISSSES' SKIRTS & TOPS
Sizes: XS-S-M-L-XL

DUAL INSTRUCTION INCLUDED: SERGER (OVERLOCK) AND STANDARD SEWING MACHINES

Size	XS	S	M	L	XL	
Finished Length of Top at Center Back from Natural Neckline						
View A & C	19 3/4 (50)	20 1/4 (51)	21 (53)	21 1/4 (54)	22 (56)	" (cm)
View B	24 1/2 (62)	25 1/4 (64)	25 3/4 (65)	26 1/4 (66)	26 3/4 (68)	" (cm)
Finished Length of Skirt - View A & B - 36" (91 cm) All Sizes View C - 24" (61 cm) All Sizes						
Finished Width of Skirt at Bottom Edge						
View A & C	48 (122)	51 (130)	54 1/2 (138)	57 1/2 (146)	61 (155)	" (cm)
View B	41 (104)	45 1/2 (115)	48 1/2 (123)	51 1/2 (131)	54 1/2 (138)	" (cm)
Material Required: Fabric requirement allows for nap, one-way design or shading. Extra fabric may be needed to match design or for shrinkage.						
Fabric 60" (152 cm) Wide						
View A Skirt & Top	1 7/8 (1.75)	2 (1.85)	2 (1.85)	2 1/4 (2.10)	2 1/4 (2.10)	yd (m)
View B Skirt & Top	2 5/8 (2.40)	2 5/8 (2.40)	2 5/8 (2.40)	3 (2.75)	3 (2.75)	yd (m)
View C Skirt	7/8 (0.80)	7/8 (0.80)	7/8 (0.80)	7/8 (0.80)	7/8 (0.80)	yd (m)
Top	1 (0.95)	1 (0.95)	1 (0.95)	1 (0.95)	1 1/8 (1.05)	yd (m)
View A or B Skirt	1 1/8 (1.05)	1 1/8 (1.05)	1 1/8 (1.05)	2 1/4 (2.10)	2 1/4 (2.10)	yd (m)
View A Top	3/4 (0.70)	7/8 (0.80)	7/8 (0.80)	1 (0.95)	1 (0.95)	yd (m)
View B Top	1 5/8 (1.50)	1 5/8 (1.50)	1 5/8 (1.50)	1 5/8 (1.50)	1 5/8 (1.50)	yd (m)

Notions: Thread. Skirt VIEW A, B & C: 7/8 yd (0.80 m) of 3/4" (2 cm) wide elastic.