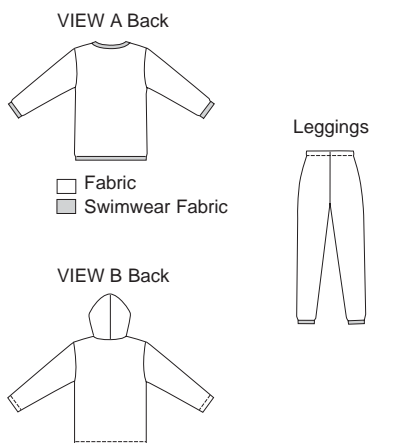


Men's pullover Tops and Leggings. View A Top has neckline, bottom edge, and sleeves finished with bindings from swimwear fabric. View B Top has hood with drawstring, patch pocket, and bottom edge and sleeves are hemmed. Very close fitting leggings, without side seams, have elastic waist, and bottom edges finished with bindings from swimwear fabric.



KWIK•SEW®
2636 price

KWIK & EASY

MEN'S TOPS & LEGGINGS
 Sizes: S-M-L-XL-XXL

DESIGNED FOR HEAVYWEIGHT STRETCH KNITS WITH 25% STRETCH
 Suggested Fabrics: Polarfleece®, blanket fleece
 Contrast Fabric for bindings in swimwear fabrics with spandex-Lycra® and with the greatest degree of stretch on lengthwise grain

Size	S	M	L	XL	XXL	
Finished Length of Top at Center Back						
View A	27 (69)	28 (71)	29 (74)	30 (76)	31 (79)	" (cm)
View B	26 (66)	27 (69)	28 (71)	29 (74)	30 (76)	" (cm)
Finished Inside Leg Seam	31 (79)	31 (79)	31 (79)	31 (79)	31 (79)	" (cm)
Material Required: Fabric requirement allows for nap, one-way design or shading. Extra fabric may be needed to match design or for shrinkage.						
Fabric 60" (152 cm) Wide						
Leggings	1 3/8 (1.30)	1 3/8 (1.30)	1 1/2 (1.40)	1 7/8 (1.75)	2 1/4 (2.10)	yd (m)
Top View A	1 5/8 (1.50)	1 5/8 (1.50)	1 3/4 (1.60)	1 3/4 (1.60)	2 (1.85)	yd (m)
Top View B	2 1/4 (2.10)	2 1/4 (2.10)	2 3/8 (2.20)	2 3/8 (2.20)	2 1/2 (2.30)	yd (m)
Swimwear Fabric for Bindings 14" (35 cm) Wide (minimum width)						
Top View A	3/4 (0.70)	3/4 (0.70)	7/8 (0.80)	7/8 (0.80)	7/8 (0.80)	yd (m)
Swimwear Fabric for Bindings 6" (15 cm) Wide (minimum width)						
Leggings	3/8 (0.35)	1/2 (0.50)	1/2 (0.50)	1/2 (0.50)	1/2 (0.50)	yd (m)

Notions: Thread. TOP VIEW A & B: Scrap piece of fusible interfacing. TOP VIEW B: One drawstring.
 LEGGINGS: 1" (2.5 cm) wide elastic – 1 yd (0.95 m) for sizes S-M-L-XL; 1 1/8 yd (1 m) for size XXL.