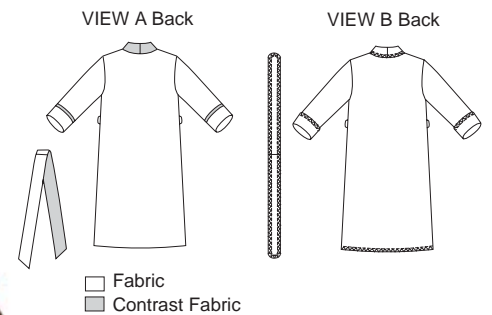


Misses' wrap robe has shawl collar, patch pockets and tie belt. View A has upper collar, facing, trim on pockets and sleeves from contrast fabric. View B has single layer collar and belt. All outside edges are finished with serger (overlock) machine; wrong side of fabric will show on collar, belt, cuffs and upper part of pockets.



**KWIK**  
*Serge*

**KWIK•SEW**  
price **2646**

**DESIGNED FOR HEAVY STRETCH KNITS ONLY**

Suggested Fabrics: Polarfleece®, heavy fleece, blanket fleece. Contrast Fabric View A also in light to medium weight knit and woven fabrics such as single knit, flannel

**MISSES' ROBES**  
Sizes: XS-S-M-L-XL

DUAL INSTRUCTION INCLUDED: SERGER (OVERLOCK) AND STANDARD SEWING MACHINES

Size	XS	S	M	L	XL	
<b>Finished Length at Center Back</b>						
View A	52 (132)	52 1/2 (133)	53 (134)	53 1/2 (136)	54 (137)	" (cm)
View B	53 (134)	53 1/2 (136)	54 (137)	54 1/2 (138)	55 (139)	" (cm)
<b>Material Required:</b> Fabric requirement allows for nap, one-way design or shading. Extra fabric may be needed to match design or for shrinkage.						
<b>Fabric 60" (152 cm) Wide</b>						
View A & B	3 1/8 (2.85)	3 1/8 (2.85)	3 1/4 (3.00)	3 1/4 (3.00)	3 3/8 (3.10)	yd (m)
<b>Contrast Fabric 45" (115 cm) or 60" (152 cm) Wide</b>						
View A	1 (0.95)	1 (0.95)	1 1/8 (1.05)	1 1/8 (1.05)	1 1/8 (1.05)	yd (m)
<b>Notions:</b> Thread, piece of non-fusible interfacing 24" x 4" (60 cm x 10 cm).						

SLEEPWEAR & LINGERIE