

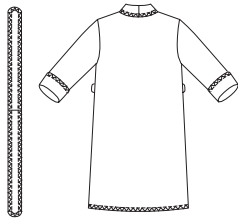


KWIK
Serge

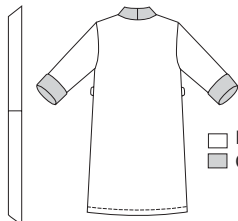
Boys' and Girls' wrap robes have shawl collar, patch pockets and tie belt. View A has single layer collar and belt, all outside edges are finished with serger (overlock) machine; wrong side of fabric will show on collar, belt, cuffs and upper part of pockets. View B has upper collar, facing and cuffs from contrast fabric.



VIEW A Back



VIEW B Back



□ Fabric
■ Contrast Fabric

KWIK•SEW®
2654 price

BOYS' & GIRLS' ROBES
Sizes: XS(4-5), S (6),
M (7-8), L (10), XL (12-14)

DESIGNED FOR HEAVY STRETCH KNITS ONLY

Suggested Fabrics: Polarfleece®, heavy fleece, blanket fleece

Contrast Fabric VIEW B also in light to medium weight knit and woven fabric such as single knit, flannel

DUAL INSTRUCTION INCLUDED: SERGER (OVERLOCK) AND STANDARD SEWING MACHINES

Size	XS (4-5)	S (6)	M (7-8)	L (10)	XL (12-14)	
Height	42 (107)	46 (117)	50 (127)	55 (140)	60 (152)	" (cm)
Chest	23 1/2 (60)	25 (64)	26 1/2 (67)	28 1/2 (72)	31 (79)	" (cm)
Hip	24 (61)	25 1/2 (65)	27 1/2 (70)	30 (76)	32 (81)	" (cm)
Finished Length at Center Back						
View A & B	28 (71)	30 1/2 (78)	33 1/2 (86)	36 1/2 (93)	40 1/2 (103)	" (cm)
Material Required: Fabric requirement allows for nap, one-way design or shading. Extra fabric may be needed to match design or for shrinkage.						
Fabric 60" (152 cm) Wide						
View A	1 3/8 (1.30)	1 1/2 (1.40)	1 5/8 (1.50)	1 3/4 (1.60)	2 (1.85)	yd (m)
View B	1 3/8 (1.30)	1 1/2 (1.40)	1 7/8 (1.75)	2 (1.85)	2 1/8 (1.95)	yd (m)
Contrast Fabric 60" (152 cm) or 45" (115 cm) Wide						
View B	3/4 (0.70)	3/4 (0.70)	3/4 (0.70)	3/4 (0.70)	7/8 (0.80)	yd (m)
Non-Fusible Interfacing 22" (56 cm) Wide						
View A & B	1/8 (0.15)	1/8 (0.15)	1/8 (0.15)	1/8 (0.15)	1/8 (0.15)	yd (m)

Notions: Thread.