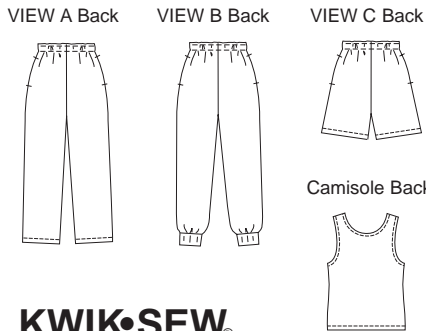




Misses' sleep pants, shorts and camisole. Pull-on pants and shorts have pockets in side seams, stitched elastic at waist with drawstring on inside waist. View B pants have ribbing cuffs. Camisole has neckline and armholes finished with narrow hems.



KWIK•SEW®
2662 price

KWIK & EASY

MISSES' SLEEP PANTS, SHORTS & CAMISOLE SLEEP PANTS & SHORTS DESIGNED FOR LIGHTWEIGHT WOVEN FABRICS
 Suggested Fabrics: Cotton, cotton types, broadcloth, chambray, flannelette
CAMISOLE DESIGNED FOR STRETCH KNITS ONLY WITH 25% STRETCH
 Suggested Fabrics: Interlock, stretch terry, textured knits, thermal knits

Size	XS	S	M	L	XL	
Finished Inside Leg Seam						
View A & B	28" (71 cm) – All Sizes					
View C	4 1/2" (12 cm) – All Sizes					
Finished Length of Camisole at Center Back from Natural Neckline						
	21 (54)	22 (56)	23 (58)	24 (61)	25 (63)	" (cm)
Material Required: Fabric requirement allows for nap, one-way design or shading. Extra fabric may be needed to match design or for shrinkage.						
Fabric 60" (152 cm) Wide						
Pants View A	1 1/2 (1.40)	1 1/2 (1.40)	2 1/8 (1.95)	2 1/4 (2.10)	2 1/4 (2.10)	yd (m)
View B	1 1/2 (1.40)	1 1/2 (1.40)	2 1/8 (1.95)	2 1/8 (1.95)	2 1/8 (1.95)	yd (m)
View C	3/4 (0.70)	1 (0.95)	1 (0.95)	1 (0.95)	1 1/8 (1.05)	yd (m)
Camisole	3/4 (0.70)	3/4 (0.70)	3/4 (0.70)	7/8 (0.80)	7/8 (0.80)	yd (m)
Fabric 45" (115 cm) Wide						
Pants View A	2 1/2 (2.30)	2 1/2 (2.30)	2 5/8 (2.40)	2 5/8 (2.40)	2 5/8 (2.40)	yd (m)
View B	2 1/4 (2.10)	2 1/2 (2.30)	2 5/8 (2.40)	2 5/8 (2.40)	2 5/8 (2.40)	yd (m)
View C	1 1/4 (1.15)	1 1/4 (1.15)	1 3/8 (1.30)	1 3/8 (1.30)	1 3/8 (1.30)	yd (m)
Ribbing 28" (71 cm) Wide						
Pants View B	5 (12)	5 (12)	5 (12)	5 (12)	5 (12)	" (cm)

Notions: Thread. PANTS VIEW A, B & C: One drawstring, scrap piece of fusible interfacing, 1 1/2" (4 cm) wide elastic – 3/4 yd (0.70 m) for sizes XS-S; 1 yd (0.95 m) for sizes M-L-XL.

SLEEPWEAR & LINGERIE