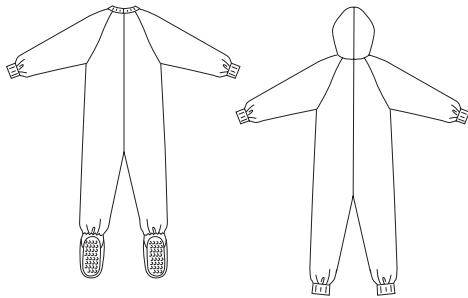




Boys' and Girls' sleeper and jumpsuit have zipper front, raglan sleeves with ribbing cuffs. View A has feet with gripper fabric and ribbing neckband. View B has hood with elastic and ribbing leg cuffs.

VIEW A Back

VIEW B Back



KWIK•SEW®

2704 price

KWIK & EASY

BOYS' & GIRLS' SLEEPER & JUMPSUIT

Sizes: XS (4-5), S (6), M (7-8), L (10), XL (12-14)

DESIGNED FOR STRETCH KNITS ONLY

Suggested Fabrics: Flame retardant blanket fleece, sweatshirt fleece, Polarfleece®, double knit, velour, textured knits

Size	XS (4-5)	S (6)	M (7-8)	L (10)	XL (12-14)	
Height	42 (107)	46 (117)	50 (127)	55 (140)	60 (152)	" (cm)
Chest	23 1/2 (60)	25 (64)	26 1/2 (67)	28 1/2 (72)	31 (79)	" (cm)
Inside Leg to Floor	17 (43)	19 1/4 (49)	21 1/2 (54)	24 (61)	27 (68)	" (cm)
Material Required: Fabric requirement allows for nap, one-way design or shading. Extra fabric may be needed to match design or for shrinkage.						
Fabric 60" (152 cm) Wide						
View A	1 5/8 (1.50)	1 3/4 (1.60)	2 (1.85)	2 1/8 (1.95)	2 3/8 (2.20)	yd (m)
View B	1 1/2 (1.40)	1 5/8 (1.50)	1 7/8 (1.75)	2 (1.85)	2 1/4 (2.10)	yd (m)
Ribbing 28" (71 cm) Wide						
View A	5 (13)	5 (13)	5 (13)	5 (13)	5 (13)	" (cm)
View B	6 (15)	6 (15)	11 (28)	11 (28)	11 (28)	" (cm)

Notions: Thread, one zipper - 14" (35 cm) for sizes XS-S; 16" (40 cm) for size M; 18" (45 cm) for size L; 20" (50 cm) for size XL.

VIEW A: 1/2 yd (0.50 m) of 1/4" (6 mm) wide elastic, gripper fabric 9" x 15" (23 cm x 38 cm) for sizes XS-S; 10" x 15" (25 cm x 38 cm) for sizes M-L; 11" x 15" (28 cm x 38 cm) for size XL. VIEW B: 3/4 yd (0.70 m) of 3/8" (1 cm) wide elastic.