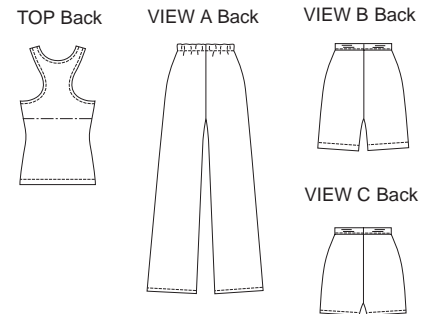




Misses' very close fitting dance pants, shorts & top. Top has scoop neckline on front, racing back, and bust lining with elastic on bottom edge. View A pants, without side seams, have straight legs and elastic waist. View B shorts, without side seams, have front panel seams and elastic waist. View C are hemmed, View C have elastic on bottom edges of legs.



KWIK•SEW®
2723 price

KWIK & EASY

MISSES' PANTS, TOP & SHORTS

Sizes: XS-S-M-L-XL

DESIGNED FOR TWO-WAY STRETCH FABRIC WITH 75% STRETCH

Suggested Fabrics: Swimsuit fabric, fabrics with spandex Lycra®, cotton Lycra®, stretch velvet with Lycra®. Pants also in Lycra® faille

Size	XS	S	M	L	XL	
Finished Length of Top from Natural Neckline	19 1/2 (49)	20 (51)	20 1/2 (52)	20 3/4 (53)	21 1/4 (54)	" (cm)
Finished Inside Leg Seam						
View A	30 1/2 (77)	30 1/2 (77)	30 1/2 (77)	30 1/2 (77)	30 1/2 (77)	" (cm)
View B	5 1/2 (14)	5 1/2 (14)	5 1/2 (14)	5 1/2 (14)	5 1/2 (14)	" (cm)
View C	2 (5)	2 (5)	2 1/4 (5.5)	2 1/2 (6)	2 1/2 (6)	" (cm)
Material Required:	Fabric requirement allows for nap, one-way design or shading. Extra fabric may be needed to match design or for shrinkage.					
Fabric 60" (152 cm) Wide with Greatest Degree of Stretch on Crosswise Grain						
Top Fabric	3/4 (0.70)	3/4 (0.70)	3/4 (0.70)	3/4 (0.70)	3/4 (0.70)	yd (m)
Top Lining	1/2 (0.50)	1/2 (0.50)	1/2 (0.50)	1/2 (0.50)	1/2 (0.50)	yd (m)
View A Pants	1 1/4 (1.15)	1 3/8 (1.30)	1 3/8 (1.30)	1 3/8 (1.30)	1 3/8 (1.30)	yd (m)
View B Shorts	5/8 (0.60)	5/8 (0.60)	5/8 (0.60)	3/4 (0.70)	3/4 (0.70)	yd (m)
View C Shorts	1/2 (0.50)	1/2 (0.50)	1/2 (0.50)	5/8 (0.60)	5/8 (0.60)	yd (m)
Fabric 60" (152 cm) Wide with Greatest Degree of Stretch on Lengthwise Grain						
Top Fabric	5/8 (0.60)	5/8 (0.60)	5/8 (0.60)	5/8 (0.60)	3/4 (0.70)	yd (m)
Top Lining	5/8 (0.60)	5/8 (0.60)	5/8 (0.60)	5/8 (0.60)	5/8 (0.60)	yd (m)
View A Pants	1 1/2 (1.40)	1 1/2 (1.40)	1 5/8 (1.50)	1 5/8 (1.50)	1 3/4 (1.60)	yd (m)
View B Shorts	5/8 (0.60)	5/8 (0.60)	3/4 (0.70)	3/4 (0.70)	3/4 (0.70)	yd (m)
View C Shorts	1/2 (0.50)	5/8 (0.60)	5/8 (0.60)	5/8 (0.60)	3/4 (0.70)	yd (m)
Fabric 45" (115 cm) Wide with Greatest Degree of Stretch on Lengthwise Grain						
Top Fabric	5/8 (0.60)	5/8 (0.60)	1 (0.95)	1 1/8 (1.05)	1 1/4 (1.15)	yd (m)
Top Lining	5/8 (0.60)	5/8 (0.60)	5/8 (0.60)	5/8 (0.60)	5/8 (0.60)	yd (m)
View A Pants	1 1/2 (1.40)	1 1/2 (1.40)	1 1/2 (1.40)	not suitable	not suitable	yd (m)
View B Shorts	3/4 (0.70)	7/8 (0.80)	7/8 (0.80)	1 (0.95)	1 (0.95)	yd (m)
View C Shorts	5/8 (0.60)	3/4 (0.70)	3/4 (0.70)	3/4 (0.70)	3/4 (0.70)	yd (m)

Notions: Thread. Top: 3/8" (1 cm) wide elastic - 2 yd (1.85 m) for size XS; 2 5/8 yd (2.40 m) for sizes S-M-L-XL. Pants & Shorts View A, B & C: 1" (2.5 cm) wide elastic - 3/4 yd (0.70 m) for sizes XS-S-M; 1 yd (0.95) sizes L-XL. VIEW C: 3/8" (1 cm) wide elastic - 1 1/4 yd (1.15 m) for sizes XS-S-M; 1 1/2 yd (1.40 m) for sizes L-XL.

ACTIVE & SWIMWEAR