



Misses' robes have dolman sleeves, front zipper, empire waist and skirt is gathered to bodice on front and back. View A and B have faced round neckline, pockets in side seams and sleeve bands from self fabric. View C has patch pockets, ribbing neckband and cuffs.

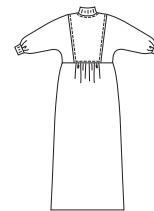
VIEW A Back



VIEW B Back



VIEW B Back



KWIK•SEW®
2726 price



MISSES' ROBES

Sizes: XS-S-M-L-XL

DESIGNED FOR WOVEN AND FIRM KNIT FABRICS

Suggested Fabrics: Terry cloth, chenille, waffle weave, velour, flannel, velveteen, robe velour

Size	XS	S	M	L	XL	
Finished Length from Natural Waist						
View A & C	38" (97 cm) All Sizes					
View B	26" (66 cm) All Sizes					
Material Required:	Fabric requirement allows for nap, one-way design or shading. Extra fabric may be needed to match design or for shrinkage.					
Fabric 60" (152 cm) Wide						
View A	2 3/8 (2.20)	2 1/2 (2.30)	3 1/4 (3.00)	3 1/4 (3.00)	3 1/4 (3.00)	yd (m)
View B	2 (1.85)	2 1/8 (1.95)	2 1/2 (2.30)	2 5/8 (2.40)	2 5/8 (2.40)	yd (m)
View C	2 3/8 (2.20)	2 1/2 (2.30)	3 1/4 (3.00)	3 1/4 (3.00)	3 1/4 (3.00)	yd (m)
Fabric 45" (115 cm) Wide						
View A	3 5/8 (3.35)	3 5/8 (3.35)	4 1/8 (3.80)	4 1/4 (3.90)	4 3/8 (4.00)	yd (m)
View B	3 3/8 (3.10)	3 1/2 (3.20)	3 1/2 (3.20)	3 1/2 (3.20)	3 5/8 (3.35)	yd (m)
View C	3 3/4 (3.45)	3 3/4 (3.45)	4 1/4 (3.90)	4 1/4 (3.90)	4 3/8 (4.00)	yd (m)
Ribbing 28" (71 cm) Wide						
View C	11 (28)	11 (28)	11 (28)	11 (28)	11 (28)	" (cm)

Notions: Thread, one 22 (55 cm) zipper, scrap piece of fusible interfacing.