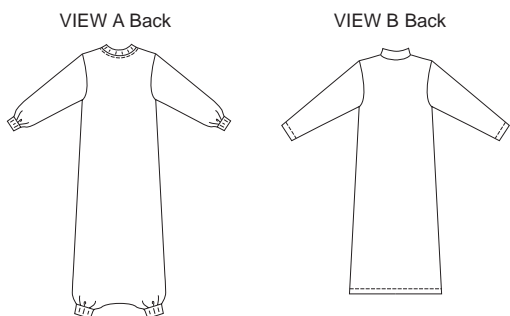




Misses' loose fitting lounge and robe have extended shoulders. View A has zipper front and patch pockets. Neckband, sleeve cuffs and leg cuffs are from ribbing. View B has stand-up collar, patch pockets and zipper front.



KWIK & EASY

KWIK•SEW®
price **2727**

DESIGNED FOR HEAVYWEIGHT STRETCH KNITS

Suggested Fabrics: Polarfleece®, sweatshirt fleece, blanket fleece

MISSSES' LOUNGER & ROBE

Sizes: XS-S-M-L-XL

Size	XS	S	M	L	XL	
Finished Length at Center Back						
View A	56 1/2 (143)	57 (144)	57 1/4 (145)	57 3/4 (146)	58 1/4 (147)	" (cm)
View B	52 1/2 (132)	53 (134)	53 1/2 (136)	54 (137)	54 1/2 (138)	" (cm)
Material Required: Fabric requirement allows for nap, one-way design or shading. Extra fabric may be needed to match design or for shrinkage.						
Fabric 60" (152 cm) Wide						
View A	2 3/8 (2.20)	2 3/8 (2.20)	2 7/8 (2.65)	3 1/8 (2.85)	3 1/8 (2.85)	yd (m)
View B	2 3/8 (2.20)	2 1/2 (2.30)	2 5/8 (2.40)	3 (2.75)	3 1/8 (2.85)	yd (m)
Ribbing 28" (71 cm) Wide						
View A	10 (26)	10 (26)	10 (26)	10 (26)	10 (26)	" (cm)
Notions: Thread, scrap piece of fusible interfacing, one 22" (55 cm) zipper.						

SLEEPWEAR & LINGERIE