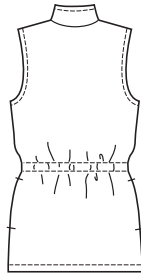
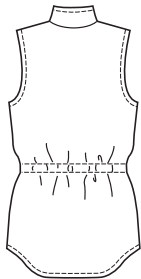




Misses' vests have stand-up collar, forward shoulder seams, zipper front, drawstring in casing at waist. View A is lined, has zipper pockets and shaped hemline. View B is unlined, has pockets in side seams. Casing for drawstring is made from lining.

VIEW A Back

VIEW B Back



**KWIK•SEW®**  
**2731** price

**MISSES' VESTS**  
 Sizes: XS-S-M-L-XL

**DESIGNED FOR HEAVYWEIGHT STRETCH KNITS**  
 Suggested Fabrics: Polarfleece®, sweatshirt fleece, berber fleece  
 Lining in stretch knits only such as single knit, interlock

Size	XS	S	M	L	XL	
<b>Finished Length at Center Back</b>						
View A & B	27 1/2 (70)	28 1/2 (72)	29 1/2 (75)	30 1/2 (77)	31 1/2 (80)	" (cm)
<b>Material Required:</b> Fabric requirement allows for nap, one-way design or shading. Extra fabric may be needed to match design or for shrinkage.						
<b>Fabric 60" (152 cm) Wide</b>						
View A	1 1/8 (1.05)	1 1/8 (1.05)	1 1/4 (1.15)	1 1/4 (1.15)	1 1/4 (1.15)	yd (m)
View B	1 1/8 (1.05)	1 1/4 (1.15)	1 1/4 (1.15)	1 1/4 (1.15)	1 3/8 (1.30)	yd (m)
<b>Lining 60" (152 cm) Wide</b>						
View A	1 1/8 (1.05)	1 1/8 (1.05)	1 1/8 (1.05)	1 1/4 (1.15)	1 1/4 (1.15)	yd (m)
View B	1/8 (0.15)	1/8 (0.15)	1/8 (0.15)	1/8 (0.15)	1/8 (0.15)	yd (m)
<b>Fusible Interfacing 22" (56 cm) Wide</b>						
View A	1/8 (0.15)	1/8 (0.15)	1/8 (0.15)	1/8 (0.15)	1/8 (0.15)	yd (m)

**Notions:** Thread, one drawstring, one separating zipper - 28" (70 cm) for sizes XS-S; 30" (75 cm) for sizes M-L; 32" (80 cm) for size XL.  
 NOTE: Purchase suggested length of zipper or longer - zipper will be trimmed on some sizes.  
 VIEW A: Two 6" (15 cm) zippers. VIEW B: Scrap piece of fusible interfacing.