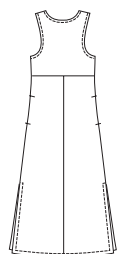
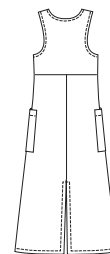


DRESSES

Misses' pull-over, slightly flared jumpers have necklines and armholes finished with bias cut bindings. View A has button closure on front bodice, large patch pockets over side seams and back slit. View B has side hemline slits and pockets in side seams.

VIEW A Back

VIEW B Back



KWIK & EASY

KWIK•SEW
price **2734**

DESIGNED FOR WOVEN AND FIRM KNIT FABRICS

Suggested Fabrics: Cotton, cotton types, linen, rayon and blends, denim, corduroy, twill, double knit

MISSES' JUMPERS
Sizes: XS-S-M-L-XL

Size	XS	S	M	L	XL
Finished Length from Natural Waist	View A & B 34" (86 cm) All Sizes				
Material Required: Fabric requirement allows for nap, one-way design or shading. Extra fabric may be needed to match design or for shrinkage.					
Fabric 60" (152 cm) Wide					
View A	2 (1.85)	2 (1.85)	2 1/8 (1.95)	2 1/8 (1.95)	2 1/4 (2.10)
View B	2 1/4 (2.10)	2 1/4 (2.10)	2 1/4 (2.10)	2 1/4 (2.10)	2 1/4 (2.10)
Fabric 45" (115 cm) Wide					
View A	3 (2.75)	3 (2.75)	3 1/8 (2.85)	3 1/4 (3.00)	3 1/4 (3.00)
View B	2 3/4 (2.55)	2 3/4 (2.55)	3 1/8 (2.85)	3 1/4 (3.00)	3 1/4 (3.00)
Fusible Interfacing 22" (56 cm) Wide					
View A	3/8 (0.35)	3/8 (0.35)	3/8 (0.35)	3/8 (0.35)	3/8 (0.35)
Notions: Thread. VIEW A: Three 5/8" (15 mm) buttons.					