



B



A



C



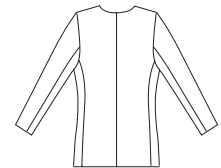
Misses' lined, semi-fitted jackets have shoulder pads and two piece sleeves. View A has collar and pockets with flaps. View B and C have shaped fronts. View B has collar. View C has V-neckline.

VIEW A Back

VIEW B Back



VIEW C Back



KWIK•SEW®

price **2736**

DESIGNED FOR MEDIUM WEIGHT WOVEN AND FIRM KNIT FABRICS

Suggested Fabrics: Linen, wool, wool blends, gabardine, tweed, silk and rayon suiting, corduroy, velveteen, double knit

MISSSES' JACKETS

Sizes: XS-S-M-L-XL

Size	XS	S	M	L	XL	
Finished Length at Center Back						
View A	35 (89)	36 (91)	37 (94)	38 (96)	39 (99)	" (cm)
View B & C	27 1/4 (69)	28 1/4 (72)	29 1/4 (74)	30 1/4 (76)	31 1/4 (79)	" (cm)
Material Required: Fabric requirement allows for nap, one-way design or shading. Extra fabric may be needed to match design or for shrinkage.						
Fabric 60" (152 cm) Wide						
View A	2 3/8 (2.20)	2 3/8 (2.20)	2 1/2 (2.30)	2 1/2 (2.30)	2 3/4 (2.55)	yd (m)
View B	2 (1.85)	2 (1.85)	2 (1.85)	2 1/8 (1.95)	2 1/8 (1.95)	yd (m)
View C	1 3/4 (1.60)	1 3/4 (1.60)	1 3/4 (1.60)	1 7/8 (1.75)	1 7/8 (1.75)	yd (m)
Fabric 45" (115 cm) Wide						
View A	3 1/2 (3.20)	3 1/2 (3.20)	3 5/8 (3.35)	3 3/4 (3.45)	3 3/4 (3.45)	yd (m)
View B	2 3/4 (2.55)	2 7/8 (2.65)	3 (2.75)	3 (2.75)	3 1/8 (2.85)	yd (m)
View C	2 5/8 (2.40)	2 5/8 (2.40)	2 3/4 (2.55)	2 3/4 (2.55)	2 7/8 (2.65)	yd (m)
Lining 45" (115 cm) Wide						
View A	2 3/8 (2.20)	2 3/8 (2.20)	2 1/2 (2.30)	2 1/2 (2.30)	2 5/8 (2.40)	yd (m)
View B & C	2 1/8 (1.95)	2 1/8 (1.95)	2 1/4 (2.10)	2 1/4 (2.10)	2 3/8 (2.20)	yd (m)
Fusible Interfacing 22" (56 cm) Wide						
View A	1 3/8 (1.30)	1 3/8 (1.30)	1 3/8 (1.30)	1 3/8 (1.30)	1 3/8 (1.30)	yd (m)
View B	1 (0.95)	1 (0.95)	1 1/8 (1.05)	1 1/8 (1.05)	1 1/8 (1.05)	yd (m)
View C	7/8 (0.80)	1 (0.95)	1 (0.95)	1 (0.95)	1 (0.95)	yd (m)

Notions: Thread, shoulder pads. VIEW A: Six 7/8" (22 mm) buttons. VIEW B: Four 7/8" (22 mm) buttons. VIEW C: Three 7/8" (22 mm) buttons.