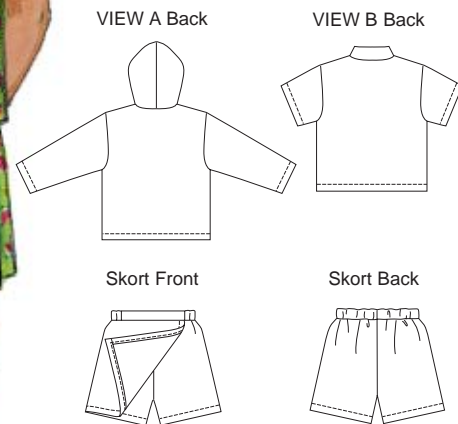


Girls' skort and tops. Pull-on skort has waistband with elastic in back. View A pullover top has long sleeves, zipper on front, hood, patch pocket and drawstring at bottom edge. View B top has front zipper, collar, patch pockets and short sleeves.



KWIK•SEW®
2751
 price
 ● **2752**

DESIGNED FOR STRETCH KNITS ONLY WITH 20% STRETCH
 Suggested Fabrics: Double knit, textured knits, French terry, heavy single knit, jersey

GIRLS' SKORT & TOPS
 2751 Sizes: 4-5-6-7
 2752 Sizes: 8-10-12-14

Size	4	5	6	7	8	10	12	14	
Finished Length of Top at Center Back	13 1/2 (34)	14 1/4 (36)	15 (38)	15 3/4 (40)	16 1/2 (42)	17 1/4 (44)	18 1/4 (46)	19 1/2 (49)	" (cm)
Finished Inside Leg Seam	2 (5)	2 1/2 (6)	2 3/4 (7)	3 1/4 (8)	3 5/8 (9)	4 (10)	4 1/2 (11)	4 3/4 (12)	" (cm)
Material Required: Fabric requirement allows for nap, one-way design or shading. Extra fabric may be needed to match design or for shrinkage.									
Fabric 60" (152 cm) Wide									
View A	1 1/4 (1.15)	1 3/8 (1.30)	1 3/8 (1.30)	1 3/4 (1.60)	1 3/4 (1.60)	1 7/8 (1.75)	2 (1.85)	2 1/8 (1.95)	yd (m)
View B	1 (0.95)	1 1/8 (1.05)	1 1/8 (1.05)	1 1/4 (1.15)	1 1/2 (1.40)	1 1/2 (1.40)	1 5/8 (1.50)	1 3/4 (1.60)	yd (m)
Fusible Interfacing 24" (60 cm) Wide									
	1/4 (0.25)	1/4 (0.25)	1/4 (0.25)	1/4 (0.25)	1/4 (0.25)	1/4 (0.25)	1/4 (0.25)	1/4 (0.25)	yd (m)

Notions: Thread, 1/2 yd (0.50 m) of 1" (2.5 cm) wide elastic. VIEW A: One 6" (15 cm) zipper, one drawstring.
 VIEW B: One separating zipper - 12" (30 cm) for sizes 4-5; 14" (35 cm) for sizes 6-7-8; 16" (40 cm) for sizes 10-12; 18" (45 cm) for size 14.
 NOTE: Purchase suggested length of zipper or longer, zipper will be trimmed.