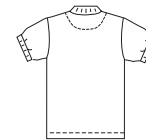




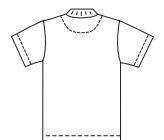
MEN'S

Men's shirts and shorts. Shirts have dropped shoulders and front placket with button closure. View A has ribbing collar and short sleeves with ribbing sleeve bands. View B has finished ribbed collar, hemmed short sleeves, and breast patch pocket. View C has self fabric collar and long sleeves. Shorts have tucks on front waist, side front pockets, and back welt pockets.

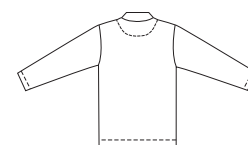
VIEW A Back



VIEW B Back



VIEW C Back



Shorts Back



KWIK-SEW®
price **2763**

SHIRT DESIGNED FOR STRETCH KNITS ONLY WITH 20% STRETCH

Suggested Fabrics: Single knit, golf knit, interlock

SHORTS DESIGNED FOR MEDIUM WEIGHT WOVEN FABRIC

Suggested Fabrics: Twill, chino, gabardine, cotton, poly blends, linen

MEN'S SHORTS & SHIRTS
Sizes: S-M-L-XL-XXL

Size	S	M	L	XL	XXL	
Finished Length of Shirt at Center Back						
View A, B & C	28 3/4 (73)	29 1/2 (75)	30 (76)	30 1/2 (77)	31 (78)	" (cm)
Finished Inside Leg Seam		8 1/2" (22 cm) - All Sizes				
Material Required: Fabric requirement allows for nap, one-way design or shading. Extra fabric may be needed to match design or for shrinkage.						
Fabric 60" (152 cm) Wide						
Shirt View A & B	1 1/2 (1.40)	1 1/2 (1.40)	1 1/2 (1.40)	1 1/2 (1.40)	2 (1.85)	yd (m)
Shirt View C	1 7/8 (1.75)	2 (1.85)	2 (1.85)	2 (1.85)	2 1/8 (1.95)	yd (m)
Shorts	1 1/8 (1.05)	1 1/8 (1.05)	1 1/4 (1.15)	1 1/2 (1.40)	1 1/2 (1.40)	yd (m)
Fabric 45" (115 cm) Wide						
Shorts	1 1/2 (1.40)	1 5/8 (1.50)	1 5/8 (1.50)	1 3/4 (1.60)	1 7/8 (1.75)	yd (m)
Lining 45" (115 cm) Wide						
Shorts (pockets)	3/8 (0.35)	5/8 (0.60)	5/8 (0.60)	5/8 (0.60)	5/8 (0.60)	yd (m)
Ribbing 28" (71 cm) Wide						
Shirt View A	12 (30)	12 (30)	16 (40)	16 (40)	16 (40)	" (cm)
Fusible Interfacing 24" (60 cm) Wide						
Shirt View A & B	3/8 (0.35)	3/8 (0.35)	3/8 (0.35)	3/8 (0.35)	3/8 (0.35)	yd (m)
Shirt View C	1/2 (0.50)	1/2 (0.50)	1/2 (0.50)	1/2 (0.50)	1/2 (0.50)	yd (m)
Shorts	5/8 (0.60)	5/8 (0.60)	3/4 (0.70)	3/4 (0.70)	7/8 (0.80)	yd (m)

Notions: Thread. **SHORTS:** One 11" (28 cm) zipper, one hook and eye. **NOTE:** Purchase suggested length of zipper or longer, zipper will be trimmed. **SHIRT:** Three 5/8" (15 mm) buttons, VIEW B: Ribbed collar.