



A



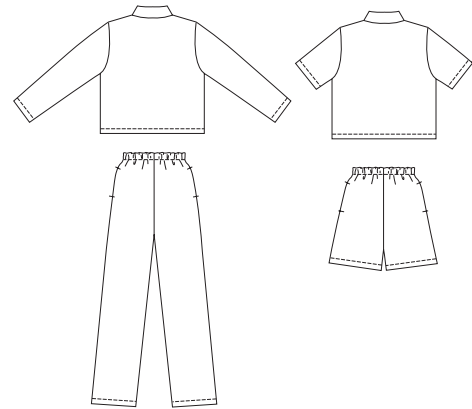
B



Misses' loose fitting jacket, pants and shorts. Boxy jacket has extended shoulders, front button closure and patch pockets. View A has long sleeves. View B has short sleeves. Pull-on pants and shorts have pockets in side seams, elastic and self fabric drawstring at waist.

VIEW A Back

VIEW B Back



KWIK•SEW®
2768 price

KWIK & EASY

MISSSES' JACKET, PANTS & SHORTS
 Sizes: XS-S-M-L-XL

DESIGNED FOR LIGHT TO MEDIUM WEIGHT WOVEN FABRICS
 Suggested Fabrics: Cotton, cotton types, linen, challis, rayon and blends, silk

| Size | XS | S | M | L | XL | |
|---|--|--------------|--------------|--------------|--------------|--------|
| Finished Length of Jacket at Center Back | | | | | | |
| View A & B | 19 1/4 (49) | 19 3/4 (50) | 20 1/2 (52) | 21 1/2 (54) | 22 1/4 (56) | " (cm) |
| Finished Inside Leg Seam | | | | | | |
| View A | 30" (76 cm) - All Sizes | | | | | |
| View B | 5" (12 cm) - All Sizes | | | | | |
| Finished Width of Leg | | | | | | |
| View A | 18 1/2 (47) | 19 1/2 (50) | 20 3/4 (53) | 22 (56) | 23 1/4 (59) | " (cm) |
| Material Required: | Fabric requirement allows for nap, one-way design or shading. Extra fabric may be needed to match design or for shrinkage. | | | | | |
| Fabric 60" (152 cm) Wide | | | | | | |
| View A | 2 7/8 (2.65) | 3 (2.75) | 3 1/8 (2.85) | 3 1/4 (3.10) | 3 1/2 (3.20) | yd (m) |
| View B | 2 1/8 (1.95) | 2 1/8 (1.95) | 2 1/4 (2.10) | 2 3/8 (2.20) | 2 3/8 (2.20) | yd (m) |
| Fabric 45" (115 cm) Wide | | | | | | |
| View A | 4 1/8 (3.80) | 4 1/8 (3.80) | 4 5/8 (4.25) | 4 3/4 (4.35) | 4 7/8 (4.50) | yd (m) |
| View B | 2 3/4 (2.55) | 2 7/8 (2.65) | 3 (2.75) | 3 (2.75) | 3 1/8 (2.85) | yd (m) |
| Fusible Interfacing 24" (60 cm) Wide | | | | | | |
| View A & B | 3/4 (0.70) | 3/4 (0.70) | 3/4 (0.70) | 3/4 (0.70) | 3/4 (0.70) | yd (m) |
| Notions: | Thread, four 7/8" (22 mm) buttons, 1 yd (0.95 m) of 1" (2.5 cm) wide elastic. | | | | | |