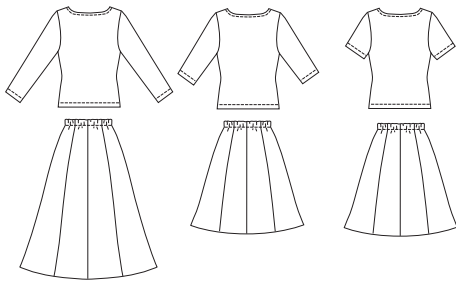




Misses' tops and skirts. Close fitting pull-over tops have boat necklines finished with narrow hems. View A has long sleeves, View B has three-quarter length sleeves and View C has short sleeves. Pull-on eight gore flared skirt has elastic in casing at waist and optional topstitching with a double needle on gore seams.

VIEW A Back VIEW B Back VIEW C Back



KWIK•SEW®
2771 price

KWIK & EASY

MISSES' TOPS & SKIRTS DESIGNED FOR STRETCH KNITS ONLY WITH 20% STRETCH
 Sizes: XS-S-M-L-XL Suggested Fabrics: Jersey, double knit, firm interlock, French terry

Size	XS	S	M	L	XL	
Finished Length of Top at Center Back						
View A, B & C	19 1/2 (49)	20 (51)	20 3/4 (52)	21 1/2 (55)	22 1/2 (57)	" (cm)
Finished Length of Skirt						
View A	34" (86 cm) All Sizes					
View B or C	22" (56 cm) All Sizes					
Finished Width of Skirt at Bottom Edge						
View A	75 (192)	79 (201)	82 (209)	85 (216)	88 (224)	" (cm)
View B & C	57 (146)	60 (154)	63 (162)	66 (169)	70 (178)	" (cm)
Material Required: Fabric requirement allows for nap, one-way design or shading. Extra fabric may be needed to match design or for shrinkage.						
Fabric 60" (152 cm) Wide						
View A Top & Skirt	3 1/4 (3.00)	3 1/4 (3.00)	3 1/4 (3.00)	3 1/4 (3.00)	3 1/4 (3.00)	yd (m)
Top	1 3/8 (1.30)	1 1/2 (1.40)	1 1/2 (1.40)	1 1/2 (1.40)	1 5/8 (1.50)	yd (m)
Skirt	2 1/4 (2.10)	2 1/4 (2.10)	2 1/4 (2.10)	2 1/4 (2.10)	2 1/4 (2.10)	yd (m)
View B Top & Skirt	2 1/4 (2.10)	2 1/4 (2.10)	2 1/4 (2.10)	2 1/4 (2.10)	2 1/4 (2.10)	yd (m)
Top	1 1/4 (1.15)	1 3/8 (1.30)	1 3/8 (1.30)	1 3/8 (1.30)	1 3/8 (1.30)	yd (m)
Skirt	1 1/2 (1.40)	1 1/2 (1.40)	1 1/2 (1.40)	1 1/2 (1.40)	1 1/2 (1.40)	yd (m)
View C Top	3/4 (0.70)	3/4 (0.70)	1 (0.95)	1 1/8 (1.05)	1 1/8 (1.05)	yd (m)
Skirt	1 1/2 (1.40)	1 1/2 (1.40)	1 1/2 (1.40)	1 1/2 (1.40)	1 1/2 (1.40)	yd (m)

Notions: Thread, 1" (2.5 cm) wide elastic - 3/4 yd (0.70 m) for sizes XS-S-M; 1 yd (0.95 m) for sizes L-XL.