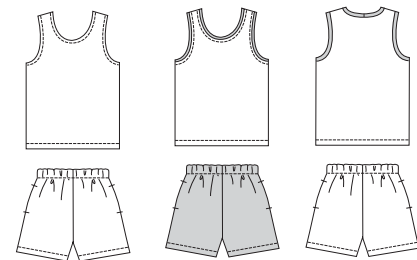


Girls' shorts & tops. Pull-on shorts have pockets in side seams and elastic in casing at waist. Tank top View A has neckline and armholes finished with narrow hems. View B tank top has bias cut bindings from the same fabric as shorts. View C top has neckband and armhole bands from contrast knit fabric. Sun and star appliqués included.

VIEW A Back VIEW B Back VIEW C Back



Appliqués Fabric Contrast Fabric



KWIK•SEW®

2773

price **2774**

KWIK & EASY

TOP DESIGNED FOR STRETCH KNITS ONLY WITH 25% STRETCH
 Suggested Fabrics: Interlock, textured knits, stretch terry, thermal knits
SHORTS DESIGNED FOR WOVEN AND FIRM KNIT FABRICS
 Suggested Fabrics: Cotton types, chino, twill, double knit

GIRLS' SHORTS & TOPS

2773 Sizes: 4-5-6-7

2774 Sizes: 8-10-12-14

Size	4	5	6	7	8	10	12	14	
Finished Length of Top at Center Back from Natural Neckline									
View A, B & C	15 (38)	16 (41)	17 (43)	18 (45)	19 (48)	20 (51)	21 (53)	22 (56)	" (cm)
Finished Inside Leg Seam									
Shorts	1 3/4 (4.5)	2 (5)	2 (5)	2 (5)	2 1/4 (6)	2 1/2 (6.5)	2 3/4 (7)	3 (7.5)	" (cm)
Material Required: Fabric requirement allows for nap, one-way design or shading. Extra fabric may be needed to match design or for shrinkage.									
Fabric 60" (152 cm) Wide									
View A, B & C Top	5/8 (0.60)	5/8 (0.60)	5/8 (0.60)	5/8 (0.60)	5/8 (0.60)	3/4 (0.70)	3/4 (0.70)	3/4 (0.70)	yd (m)
View C Top Contrast Fabric	1/8 (0.15)	1/8 (0.15)	1/8 (0.15)	1/8 (0.15)	1/8 (0.15)	1/8 (0.15)	1/8 (0.15)	1/8 (0.15)	yd (m)
View A & C Shorts	1/2 (0.50)	1/2 (0.50)	1/2 (0.50)	1/2 (0.50)	1/2 (0.50)	5/8 (0.60)	5/8 (0.60)	5/8 (0.60)	yd (m)
View B Shorts & Top Bindings	5/8 (0.60)	5/8 (0.60)	5/8 (0.60)	5/8 (0.60)	5/8 (0.60)	3/4 (0.70)	7/8 (0.80)	7/8 (0.80)	yd (m)
Fabric 45" (115 cm) Wide									
View A & C Shorts	5/8 (0.60)	3/4 (0.70)	3/4 (0.70)	3/4 (0.70)	3/4 (0.70)	3/4 (0.70)	3/4 (0.70)	7/8 (0.80)	yd (m)
View B Shorts & Top Bindings	3/4 (0.70)	3/4 (0.70)	7/8 (0.80)	7/8 (0.80)	7/8 (0.80)	1 (0.95)	1 1/8 (1.05)	1 1/8 (1.05)	yd (m)

Notions: Thread. SHORTS: Scrap piece of fusible interfacing, 1" (2.5 cm) wide elastic - 5/8 yd (0.60 m) for sizes 4-5-6-7; 3/4 yd (0.70 m) for sizes 8-10-12-14. Optional Appliqué: Scrap piece of fabric, paper backed fusible web and tear away material.