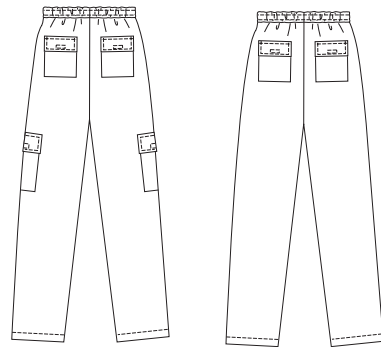




VIEW A Back

VIEW B Back



Men's pants have fly zipper, front side pockets, back patch pockets with flaps and Velcro® closures. Waistband has stitched elastic and drawstring. View A has side leg pockets with flaps and Velcro® closures.

KWIK•SEW®
2776 price

MEN'S PANTS DESIGNED FOR MEDIUM WEIGHT WOVEN FABRICS
 Sizes: S-M-L-XL-XXL Suggested Fabrics: Cotton, cotton types, gabardine, twill, chino, sheeting, linen, denim

Size	S	M	L	XL	XXL	
Finished Inside Leg Seam	View A & B 31" (79 cm) All Sizes					
Finished Width at Bottom Edge of Leg	17 1/2 (44)					
Material Required:	Fabric requirement allows for nap, one-way design or shading. Extra fabric may be needed to match design or for shrinkage.					
Fabric 60" (152 cm) Wide		18 1/2 (47)	19 1/2 (49.5)	20 1/2 (52)	21 1/2 (54.5)	" (cm)
View A	1 7/8 (1.75)	1 7/8 (1.75)	2 3/8 (2.20)	2 3/8 (2.20)	2 5/8 (2.40)	yd (m)
View B	1 3/4 (1.60)	1 7/8 (1.75)	2 3/8 (2.20)	2 3/8 (2.20)	2 5/8 (2.40)	yd (m)
Fabric 45" (115 cm) Wide		2 3/4 (2.55)	3 (2.75)	3 1/8 (2.85)	3 1/4 (3.00)	yd (m)
View A	2 5/8 (2.40)	2 3/4 (2.55)	3 (2.75)	3 1/8 (2.85)	3 1/4 (3.00)	yd (m)
View B	2 1/2 (2.30)	2 5/8 (2.40)	3 (2.75)	3 (2.75)	3 1/8 (2.85)	yd (m)
Fusible Interfacing 24" (60 cm) Wide		3/8 (0.35)	3/8 (0.35)	3/8 (0.35)	3/8 (0.35)	yd (m)
View A & B	3/8 (0.35)	3/8 (0.35)	3/8 (0.35)	3/8 (0.35)	3/8 (0.35)	yd (m)

Notions: Thread, 1 yd (0.95 m) of 1 1/2" (4 cm) wide elastic, one zipper - 9" (22 cm) for sizes S-M-L; 11" (28 cm) for sizes XL-XXL, one drawstring, one button or snap. VIEW A: 8" (20 cm) of 5/8" (15 mm) wide Velcro®. VIEW B: 4" (10 cm) of 5/8" (15 mm) wide Velcro®.
 NOTE: Purchase suggested length of zipper or longer, zipper will be trimmed.