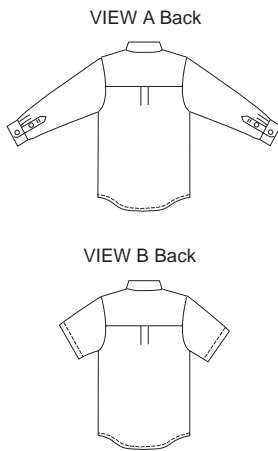


Men's dress shirts have left front tab, double yoke, collar with collar stand, patch pocket and shirt-tail hemline. View A has long sleeves with cuffs and sleeve plackets. View B has short hemmed sleeves.



**KWIK•SEW®**  
**2777** price

**MEN'S SHIRTS**

Sizes: S-M-L-XL-XXL

With Neck Sizes: 14 1/2 - 15 1/2 - 16 1/2  
 17 1/2 - 18 1/2

DESIGNED FOR LIGHTWEIGHT WOVEN FABRIC

Suggested Fabrics: Cotton, cotton types, oxford cloth, broadcloth, chambray

<b>Neck Size</b>	14 1/2 (37)	15 1/2 (39)	16 1/2 (42)	17 1/2 (44)	18 1/2 (47)	" (cm)
------------------	-------------	-------------	-------------	-------------	-------------	--------

NOTE: Any neck size can be used with any size body.

<b>Size</b>	<b>S</b>	<b>M</b>	<b>L</b>	<b>XL</b>	<b>XXL</b>	
<b>Finished Length at Center Back</b>						
View A & B	31 (79)	32 (81)	33 (83)	33 3/4 (85)	34 3/4 (88)	" (cm)

**Material Required:** Fabric requirement allows for nap, one-way design or shading. Extra fabric may be needed to match design or for shrinkage.

<b>Fabric 60" (152 cm) Wide</b>						
View A	1 7/8 (1.75)	2 1/8 (1.95)	2 1/8 (1.95)	2 1/4 (2.10)	2 1/4 (2.10)	yd (m)
View B	1 3/4 (1.60)	1 3/4 (1.60)	1 7/8 (1.75)	2 (1.85)	2 (1.85)	yd (m)

<b>Fabric 45" (115 cm) Wide</b>						
View A	2 3/4 (2.55)	2 3/4 (2.55)	3 (2.75)	3 (2.75)	3 1/8 (2.85)	yd (m)
View B	2 3/8 (2.20)	2 3/8 (2.20)	2 3/8 (2.20)	2 1/2 (2.30)	2 5/8 (2.40)	yd (m)

<b>Fusible Interfacing 24" (60 cm) Wide</b>						
View A & B	3/4 (0.70)	7/8 (0.80)	7/8 (0.80)	7/8 (0.80)	7/8 (0.80)	yd (m)

**Notions:** Thread. VIEW A: Eleven 1/2" (13 mm) buttons. VIEW B: Seven 1/2" (13 mm) buttons.