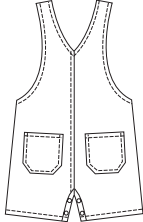
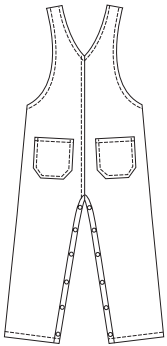


Toddlers' bib overalls have fake fly, side pockets, bib pocket, shoulder straps with buckles, side openings with button closures, back pockets, and snap on inside legs.

VIEW A Back

VIEW B Back



**KWIK•SEW®**  
**2785** price

**TODDLERS' OVERALLS**  
 Sizes: T1-T2-T3-T4

DESIGNED FOR WOVEN FABRICS  
 Suggested Fabrics: Twill, denim, corduroy, gabardine, chino, cotton types, linen

Size	T1	T2	T3	T4	
<b>Finished Inside Leg Seam</b>					
View A	11 (28)	12 1/2 (31)	14 (35)	15 1/2 (39)	" (cm)
View B	2 (5)	2 (5)	2 (5)	2 (5)	" (cm)
<b>Material Required:</b>	Fabric requirement allows for nap, one-way design or shading. Extra fabric may be needed to match design or for shrinkage.				
<b>Fabric 60" (152 cm) Wide</b>					
View A	1 1/8 (1.05)	1 1/8 (1.05)	1 1/4 (1.15)	1 3/8 (1.30)	yd (m)
View B	7/8 (0.80)	7/8 (0.80)	7/8 (0.80)	1 (0.95)	yd (m)
<b>Fabric 45" (115 cm) Wide</b>					
View A	1 1/8 (1.05)	1 1/8 (1.05)	1 1/4 (1.15)	1 3/8 (1.30)	yd (m)
View B	7/8 (0.80)	7/8 (0.80)	7/8 (0.80)	1 (0.95)	yd (m)
<b>Lining 45" (115 cm) Wide</b>					
View A or B	1/4 (0.25)	1/4 (0.25)	1/4 (0.25)	1/4 (0.25)	yd (m)

**Notions:** Thread. 1 3/8" (3.5 cm) wide overall buckle set, two 5/8" (15 mm) buttons. VIEW A: 2 yd (1.85 m) of wide single fold bias tape, snaps for inside leg - eight for size T1; ten for sizes T2-T3; twelve for size T4. VIEW B: 1/2 yd (0.50 m) of wide single fold bias tape, four snaps for inside leg.