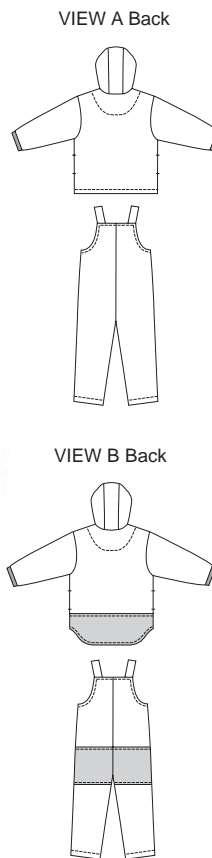


Toddlers' Overalls and Jackets. Overalls have zipper on front, shoulder straps with button closure and facings and inside shoulder straps are from contrast fabric. View B has knee and seat patches from contrast fabric. Unlined jacket has zipper front, side pockets and hood. Front edge of hood and bottom edges of sleeves are finished with binding from swimwear fabric and the facings and inside hood are from contrast fabric. View B has longer back with contrast patch.



- Fabric
- Contrast Fabric
- Swimwear Fabric for Bindings



Hat Pattern 2710

BABY & TODDLER

**KWIK•SEW®**  
price **2793**

**DESIGNED FOR HEAVYWEIGHT STRETCH KNITS**

Suggested Fabrics: Polarfleece®, heavy sweatshirt fleece, Berber fleece  
 Contrast Fabric: Light to medium weight woven fabric such as windbreaker fabric, supplex. View A also in flannel, cotton types  
 Contrast Fabric for Binding in swimwear fabric with spandex-Lycra® and with the greatest degree of stretch on lengthwise grain

**TODDLERS' OVERALLS & JACKETS**  
 Sizes: T1-T2-T3-T4

Size	T1	T2	T3	T4	
<b>Finished Length of Jacket at Center Back</b>					
View A	13 (33)	13 3/4 (35)	14 3/4 (37)	15 3/4 (40)	" (cm)
View B (back is longer)	15 1/4 (39)	16 1/4 (41)	17 1/4 (43)	18 (46)	" (cm)
<b>Finished Inside Leg Seam of Overalls</b>					
View A or B	10 (25)	11 1/2 (29)	13 (33)	14 1/2 (37)	" (cm)
<b>Material Required:</b> Fabric requirement allows for nap, one-way design or shading. Extra fabric may be needed to match design or for shrinkage.					
<b>Fabric 60" (152 cm) Wide</b>					
View A Jacket & Overalls	1 3/8 (1.30)	1 3/8 (1.30)	1 1/2 (1.40)	1 5/8 (1.50)	yd (m)
View A Overalls	3/4 (0.70)	7/8 (0.80)	7/8 (0.80)	1 (0.95)	yd (m)
View A Jacket	3/4 (0.70)	7/8 (0.80)	7/8 (0.80)	7/8 (0.80)	yd (m)
View B Jacket & Overalls	1 1/4 (1.15)	1 3/8 (1.30)	1 1/2 (1.40)	1 1/2 (1.40)	yd (m)
<b>Contrast Fabric 60" (152 cm) Wide</b>					
View A Jacket & Overalls	1/2 (0.50)	5/8 (0.60)	5/8 (0.60)	5/8 (0.60)	yd (m)
View A Overalls	3/8 (0.35)	3/8 (0.35)	3/8 (0.35)	3/8 (0.35)	yd (m)
View A Jacket	1/2 (0.50)	5/8 (0.60)	5/8 (0.60)	5/8 (0.60)	yd (m)
View B Jacket & Overalls	3/4 (0.70)	3/4 (0.70)	3/4 (0.70)	3/4 (0.70)	yd (m)
<b>Contrast Fabric 45" (115 cm) Wide</b>					
View A Jacket & Overalls	1/2 (0.50)	5/8 (0.60)	5/8 (0.60)	5/8 (0.60)	yd (m)
View A Overalls	3/8 (0.35)	3/8 (0.35)	3/8 (0.35)	3/8 (0.35)	yd (m)
View A Jacket	1/2 (0.50)	1/2 (0.50)	1/2 (0.50)	5/8 (0.60)	yd (m)
View B Jacket & Overalls	7/8 (0.80)	7/8 (0.80)	1 (0.95)	1 (0.95)	yd (m)
<b>Swimwear Fabric for Binding 6" (15 cm) Wide (minimum width)</b>					
View A or B Jacket	1/2 (0.50)	1/2 (0.50)	1/2 (0.50)	1/2 (0.50)	yd (m)

**Notions:** Thread. VIEW A & B Jacket: One separating zipper - 12" (30 cm) for size T1; 14" (35 cm) for sizes T2-T3; 16" (40 cm) for size T4. Overalls: Scrap piece of fusible interfacing, one zipper - 9" (23 cm) for size T1; 12" (30 cm) for sizes T2-T3-T4, two 5/8" (15 mm) buttons. NOTE: Purchase suggested length of zipper or longer, zipper will be trimmed.