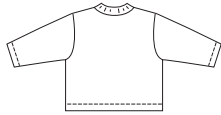


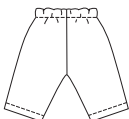


Baby overalls, jacket, pants and hat. Pull-over overalls have neck-line and armholes finished with narrow hems and snap closure on inside legs. Jacket has ribbing neckband and snap or button closure. Pull-on pants, without side seams, have elastic in casing at waist. Hat has four panels, ears and ribbing cuff.

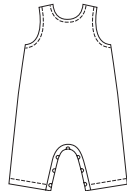
JACKET Back



PANTS Back



OVERALLS Back



HAT



BABY & TODDLER

KWIK•SEW®
price **2794**

DESIGNED FOR HEAVYWEIGHT STRETCH KNITS ONLY
Suggested Fabrics: Polarfleece®, sweatshirt fleece, Berber fleece

**BABY JACKET, PANTS,
OVERALLS & HAT**
Sizes: XS-S-M-L-XL

Size	XS	S	M	L	XL	
Head Circumference	13 1/2 (34)	15 (38)	16 1/2 (42)	18 (46)	19 1/2 (49)	" (cm)
Finished Length of Jacket at Center Back	8 3/4 (22)	9 3/4 (25)	10 3/4 (27)	11 3/4 (30)	12 3/4 (32)	" (cm)
Material Required: Fabric requirement allows for nap, one-way design or shading. Extra fabric may be needed to match design or for shrinkage.						
Fabric 60" (152 cm) Wide						
Jacket & Hat	3/8 (0.35)	3/8 (0.35)	1/2 (0.50)	1/2 (0.50)	5/8 (0.60)	yd (m)
Pants	1/2 (0.50)	1/2 (0.50)	5/8 (0.60)	5/8 (0.60)	3/4 (0.70)	yd (m)
Overalls	5/8 (0.60)	3/4 (0.70)	3/4 (0.70)	7/8 (0.80)	7/8 (0.80)	yd (m)
Ribbing 28" (70 cm) Wide						
Jacket & Hat	1/4 (0.25)	1/4 (0.25)	1/4 (0.25)	1/4 (0.25)	1/4 (0.25)	yd (m)

Notions: Thread. JACKET: Snaps or 1/2" (12 mm) buttons - three for sizes XS-S; four for sizes M-L-XL. 3/8 yd (0.35 m) of fusible interfacing. OVERALLS: Gripper snaps for inside leg - five for sizes XS-S; seven for sizes M-L-XL. PANTS: 1/2 yd (0.50 m) of 3/4" (2 cm) wide elastic.