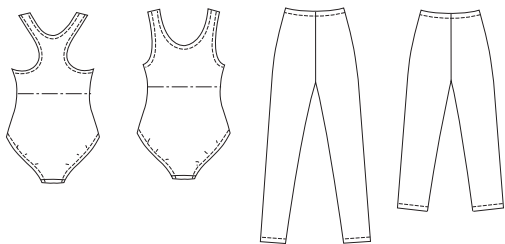




Misses' leotards and leggings. Leotard has scoop neckline, shelf bra lining with elastic, lined crotch and all outside edges are finished with elastic. View A has racing style back, View B has scoop neckline on back. Leggings without side seams, in two lengths have elastic waist. View A are full length. View B are 5" (12 cm) shorter.

VIEW A Back VIEW B Back VIEW A Back VIEW B Back



ACTIVE & SWIMWEAR

**KWIK•SEW®**  
**2797** price

**LEOTARDS WITH SHELF BRA LINING**  
**KWIK & EASY**

**MISSES' LEOTARDS & LEGGINGS** DESIGNED FOR TWO-WAY STRETCH FABRIC WITH 75% STRETCH  
 Sizes: XS-S-M-L-XL Suggested Fabrics: Cotton Lycra®, nylon Lycra®, swimwear fabric, stretch velvet

Size	XS	S	M	L	XL	" (cm)
<b>Inside Leg to Floor</b>	31 1/2 (80)	31 1/2 (80)	31 1/2 (80)	31 1/2 (80)	31 1/2 (80)	" (cm)
<b>Material Required:</b> Fabric requirement allows for nap, one-way design or shading. Extra fabric may be needed to match design or for shrinkage.						
<b>Fabric 60" (152 cm) Wide with Greatest Degree of Stretch on Crosswise Grain</b>						
Leotard						
View A or B	7/8 (0.80)	7/8 (0.80)	1 (0.95)	1 (0.95)	1 (0.95)	yd (m)
Leggings						
View A	1 1/8 (1.05)	1 1/4 (1.15)	1 1/4 (1.15)	1 1/4 (1.15)	1 1/4 (1.15)	yd (m)
View B	1 (0.95)	1 (0.95)	1 1/8 (1.05)	1 1/8 (1.05)	1 1/8 (1.05)	yd (m)
<b>Fabric 45" (115 cm) Wide with Greatest Degree of Stretch on Lengthwise Grain</b>						
Leotard						
View A or B	1 (0.95)	1 (0.95)	1 1/8 (1.05)	1/4 (1.15)	1 1/4 (1.15)	yd (m)
Leggings						
View A or B	1 1/4 (1.15)	1 1/4 (1.15)	1 3/8 (1.30)	1 1/2 (1.40)	1 5/8 (1.50)	yd (m)
<b>Lining 45" (115 cm) or 60" (152 cm) Wide with Greatest Degree of Stretch on Lengthwise Grain</b>						
Leotard						
View A or B	1/2 (0.50)	5/8 (0.60)	5/8 (0.60)	5/8 (0.60)	5/8 (0.60)	yd (m)
<b>Notions:</b> Thread. LEOTARD: 7/8 yd (0.80 m) of 3/4" (2 cm) wide elastic, 3/8" (1 cm) wide elastic - 3 1/2 yd (3.20 m) for sizes XS-S-M; 4 yd (3.70 m) for sizes L-XL. LEGGINGS: 7/8 yd (0.80 m) of 3/4" (2 cm) wide elastic.						