

# KWIK Start™ LEARN-TO-SEW

ESPECIALLY DESIGNED FOR FIRST SEWING PROJECT!

KNIT TOPS

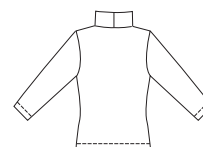
KWIK Start™ LEARN-TO-SEW



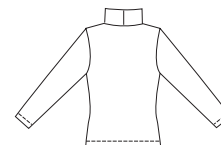
VIEW A Back



VIEW B Back



VIEW C Back



Misses' pull-over tops. View A has boat neckline finished with narrow hem and short sleeves. View B and C have wide neckline with a stand up collar that can be worn folded or scrunched. View B has three-quarter length sleeves. View C has full length sleeves.

KWIK•SEW®

2804 price

**MISSES' TOPS** DESIGNED FOR STRETCH KNITS ONLY WITH 20% STRETCH ACROSS THE GRAIN  
 Sizes: XS-S-M-L-XL Suggested Fabrics: single knit, interlock, jersey, textured knits

Size	XS	S	M	L	XL	
<b>Finished Length at Center Back</b>						
View A, B & C	22 3/4 (58)	23 1/2 (60)	24 1/4 (61)	24 3/4 (63)	25 3/4 (65)	" (cm)
<b>Material Required:</b> Fabric requirement allows for nap, one-way design or shading. Extra fabric may be needed to match design or for shrinkage.						
<b>Fabric 60" (152 cm) Wide</b>						
View A	1 1/8 (1.05)	1 1/8 (1.05)	1 1/8 (1.05)	1 1/4 (1.15)	1 1/4 (1.15)	yd (m)
View B	1 3/8 (1.30)	1 3/8 (1.30)	1 1/2 (1.40)	1 1/2 (1.40)	1 1/2 (1.40)	yd (m)
View C	1 1/2 (1.40)	1 1/2 (1.40)	1 5/8 (1.50)	1 5/8 (1.50)	1 5/8 (1.50)	yd (m)
<b>Notions:</b> Thread.						