

KWIK Start™ LEARN-TO-SEW

ESPECIALLY DESIGNED FOR FIRST SEWING PROJECT!

KWIK Start™ LEARN-TO-SEW

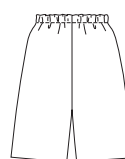


Misses' pull-on pants and shorts in two different lengths have elastic in casing at waist. Pants and shorts are very easy to sew and have special easy to follow sewing instructions.

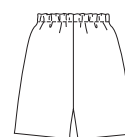
VIEW A Back



VIEW B Back



VIEW C Back



KWIK•SEW®
2806 price

MISSES' PANTS & SHORTS

Sizes: XS-S-M-L-XL

DESIGNED FOR LIGHT TO MEDIUM WEIGHT WOVEN AND FIRM KNIT FABRICS

Suggested Fabrics: Cotton, cotton types, sheeting, rayon and blends, linen, French terry, flannel, double knit, jersey

Size	XS	S	M	L	XL	
Finished Inside Leg Seam						
View A	29" (74 cm) - All Sizes					
View B	8" (20 cm) - All Sizes					
View C	4" (10 cm) - All Sizes					
Finished Width of Leg at Bottom Edge						
View A	17 1/2 (44)	18 1/2 (47)	19 1/2 (49.5)	20 1/2 (52)	21 1/2 (54)	" (cm)
View B	20 3/4 (53)	22 1/4 (56.5)	23 3/4 (60)	25 1/2 (65)	27 1/4 (69)	" (cm)
View C	22 3/4 (58)	24 (61)	25 3/4 (66)	27 1/2 (70)	29 5/8 (75)	" (cm)
Material Required: Fabric requirement allows for nap, one-way design or shading. Extra fabric may be needed to match design or for shrinkage.						
Fabric 60" (152 cm) Wide						
View A	1 3/8 (1.30)	1 1/2 (1.40)	1 7/8 (1.75)	2 1/4 (2.10)	2 3/8 (2.20)	yd (m)
View B	3/4 (0.70)	1 (0.95)	1 1/8 (1.05)	1 1/8 (1.05)	1 1/4 (1.15)	yd (m)
View C	3/4 (0.70)	7/8 (0.80)	7/8 (0.80)	1 (0.95)	1 1/8 (1.05)	yd (m)
Fabric 45" (115 cm) Wide						
View A	2 3/8 (2.20)	2 5/8 (2.40)	2 5/8 (2.40)	2 3/4 (2.55)	2 3/4 (2.55)	yd (m)
View B	1 3/8 (1.30)	1 1/2 (1.40)	1 1/2 (1.40)	1 1/2 (1.40)	1 5/8 (1.50)	yd (m)
View C	1 1/8 (1.05)	1 1/4 (1.15)	1 1/4 (1.15)	1 3/8 (1.30)	1 3/8 (1.30)	yd (m)

Notions: Thread, 1 yd (0.95 m) of 1" (2.5 cm) wide elastic.

PANTS