



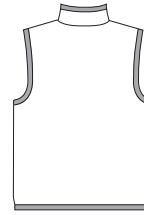
A



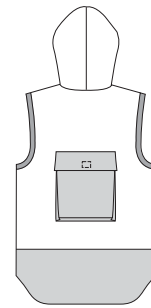
B



VIEW A Back



VIEW B Back



- Fabric
- Contrast Fabric
- Swimwear Fabric

Unisex vests have zipper front. View A has collar, zipper pockets and all outside edges are finished with bindings from swimwear fabric. View B has hood, pockets in side seams, safari type patch pocket with flap on back from contrast fabric, flap has Velcro® closure, and back is longer with contrast fabric. Front edges, hood and arm-holes are finished with bindings from swimwear fabric.



KWIK•SEW®
2816 price

DESIGNED FOR HEAVYWEIGHT STRETCH KNITS

Suggested Fabrics: Polarfleece®, berber fleece, heavy sweatshirt fleece

Contrast Fabric View B in windbreaker type fabrics

Bindings from two-way stretch swimwear fabric with 75% stretch

UNISEX VESTS
 Sizes: XS-S-M-L-XL

Size	XS	S	M	L	XL	" (cm)
Chest	33 (84)	36 (91)	39 (99)	42 (106)	45 (114)	" (cm)
Finished Length at Center Back						
View A	25 1/4 (64)	25 1/4 (64)	25 1/4 (64)	27 1/2 (70)	27 1/2 (70)	" (cm)
View B (back is longer)	28 (71)	28 (71)	28 (71)	30 1/2 (77)	30 1/2 (77)	" (cm)
Material Required: Fabric requirement allows for nap, one-way design or shading. Extra fabric may be needed to match design or for shrinkage.						
Fabric 60" (152 cm) Wide						
View A	1 (0.95)	1 (0.95)	1 (0.95)	1 (0.95)	1 (0.95)	yd (m)
View B	1 3/8 (1.30)	1 3/8 (1.30)	1 3/8 (1.30)	1 3/8 (1.30)	1 3/8 (1.30)	yd (m)
Swimwear Fabric 60" (152 cm) Wide						
View A	3/8 (0.35)	3/8 (0.35)	3/8 (0.35)	3/8 (0.35)	3/8 (0.35)	yd (m)
View B	1/4 (0.25)	1/4 (0.25)	1/4 (0.25)	1/4 (0.25)	1/4 (0.25)	yd (m)
Contrast Fabric View B						
60" (152 cm) Wide	3/8 (0.35)	3/8 (0.35)	3/8 (0.35)	3/8 (0.35)	3/8 (0.35)	yd (m)
45" (115 cm) Wide	1/2 (0.50)	1/2 (0.50)	1/2 (0.50)	1/2 (0.50)	1/2 (0.50)	yd (m)
Pocket Lining 45" (115 cm) Wide						
View A	3/8 (0.35)	3/8 (0.35)	3/8 (0.35)	3/8 (0.35)	3/8 (0.35)	yd (m)
Fusible Interfacing 24" (60 cm) Wide						
View B	1/4 (0.25)	1/4 (0.25)	1/4 (0.25)	1/4 (0.25)	1/4 (0.25)	yd (m)

Notions: Thread. VIEW A: One separating zipper 24" (60 cm) for sizes XS-S-M; 26" (65 cm) for sizes L-XL, two 7" (18 cm) zippers, scrap piece of fusible interfacing. VIEW B: One separating zipper 22" (55 cm) for sizes XS-S-M; 24" (60 cm) for sizes L-XL, 1" (2.5 cm) of 5/8" (15 mm) wide Velcro®.