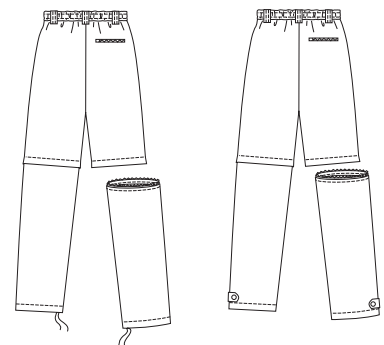


MEN'S

Men's convertible pants have zip-off legs. Pants have fly zipper, waistband with elastic, belt carriers, and zipper pocket on back. View A has front patch pockets and inverted pleat pockets with flaps and Velcro® closures. Bottom edges of pants have drawstrings. View B has front patch pockets and bottom edges of legs have tabs with buttons or snaps.

VIEW A Back

VIEW B Back



KWIK•SEW®
price **2820**

DESIGNED FOR LIGHT TO MEDIUM WEIGHT WOVEN FABRICS
Suggested Fabrics: Water repellent cotton, cotton types, poplin, windbreaker fabric, supplex, nylon and nylon blends.

MEN'S CONVERTIBLE PANTS
Sizes: S-M-L-XL-XXL

Size	S	M	L	XL	XXL
Finished Inside Leg Seam					
View A & B	30 1/2 (78)	30 1/2 (78)	30 1/2 (78)	30 1/2 (78)	30 1/2 (78) " (cm)
Finished Width at Bottom Edge of Leg					
View A	18 1/2 (47)	19 1/2 (49)	20 1/2 (52)	21 1/2 (54)	22 1/2 (57) " (cm)
Material Required: Fabric requirement allows for nap, one-way design or shading. Extra fabric may be needed to match design or for shrinkage.					
Fabric 60" (152 cm) Wide					
View A	2 1/8 (1.95)	2 1/4 (2.10)	2 3/8 (2.20)	2 1/2 (2.30)	2 5/8 (2.40) yd (m)
View B	2 (1.85)	2 (1.85)	2 3/8 (2.20)	2 1/2 (2.30)	2 5/8 (2.40) yd (m)
Fabric 45" (115 cm) Wide					
View A	2 7/8 (2.65)	2 7/8 (2.65)	3 1/4 (3.00)	3 1/4 (3.00)	3 3/8 (3.10) yd (m)
View B	2 5/8 (2.40)	2 5/8 (2.40)	3 1/4 (3.00)	3 1/4 (3.00)	3 3/8 (3.10) yd (m)
Fusible interfacing 24" (60 cm) Wide					
View A	3/8 (0.35)	3/8 (0.35)	3/8 (0.35)	3/8 (0.35)	3/8 (0.35) yd (m)
View B	1/4 (0.25)	1/4 (0.25)	1/4 (0.25)	1/4 (0.25)	1/4 (0.25) yd (m)

Notions: Thread; 1 yd (0.95 m) of 1 1/2" (4 cm) wide elastic; one zipper: 9" (22 cm) for sizes S-M-L-XL, 11" (28 cm) for size XXL; one 6" (15 cm) zipper for back pocket; two separating zippers-24" (60 cm) for size S; 26" (65 cm) for size M; 28" (70 cm) for size L; 30" (75 cm) for size XL; 32" (82 cm) for size XXL, one button or snap. View A: 3" (8 cm) of 5/8" (15 mm) wide Velcro®, two drawstrings for bottom edges of legs. View B: four buttons or snaps. **Note:** Use light to medium weight separating zippers.