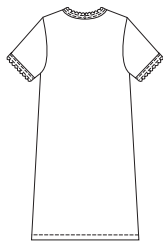




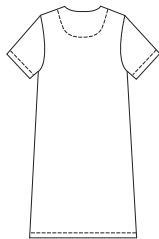
Misses' pull-over nightshirts. View A has ribbing neckband and long sleeves. View B has round neckline and short sleeves. Neckline and bottom edges of sleeves are finished with self fabric bindings with outer edges scalloped. View C has short sleeves, V-neckline trimmed with lace and back neckline finished with facing.

VIEW A Back

VIEW B Back



VIEW C Back



KWIK•SEW®
2821 price



MISSES' NIGHTSHIRTS

DESIGNED FOR STRETCH KNITS ONLY WITH 20% STRETCH

Sizes: XS-S-M-L-XL

Suggested Fabrics: Single knit, interlock, thermal knit, textured knits

DUAL INSTRUCTION INCLUDED: SERGER (OVERLOCK) AND STANDARD SEWING MACHINES

Size	XS	S	M	L	XL	
Finished Length at Center Back						
View A, B, or C	34 (86)	35 (89)	36 (91)	37 (94)	38 (96)	" (cm)
Material Required: Fabric requirement allows for nap, one-way design or shading. Extra fabric may be needed to match design or for shrinkage.						
Fabric 60" (152 cm) Wide						
View A	1 3/4 (1.60)	1 3/4 (1.60)	1 7/8 (1.75)	1 7/8 (1.75)	1 7/8 (1.75)	yd (m)
View B	1 3/8 (1.30)	1 3/8 (1.30)	1 3/8 (1.30)	1 1/2 (1.40)	1 1/2 (1.40)	yd (m)
View C	1 3/8 (1.30)	1 3/8 (1.30)	1 3/8 (1.30)	1 1/2 (1.40)	1 1/2 (1.40)	yd (m)
Ribbing 28" (70 cm) Wide						
View A	3 (8)	3 (8)	3 (8)	3 (8)	3 (8)	" (cm)

Notions: Thread, scrap piece of fusible interfacing. VIEW C: 3/4 yd (0.70 m) of 1/2" - 1 1/2" (1.5 cm - 4 cm) wide lace.