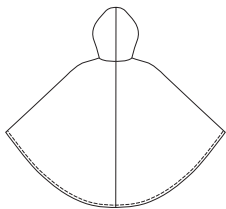
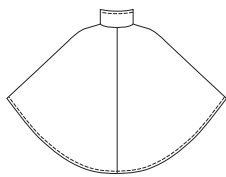




VIEW A Back



VIEW B Back



Misses' ponchos have zipper front and zipper pockets. Poncho is double with inside from contrast fabric and can be made reversible. View A has hood with drawstring. View B has collar with drawstring.

JACKETS

KWIK•SEW®
2826 price

MISSSES' PONCHOS
 Sizes: XS-S-M-L-XL

DESIGNED FOR LIGHTWEIGHT WOVEN FABRICS

Suggested Fabrics: Windbreaker fabric, water repellent fabrics, nylon, poplin, chino
 Contrast Fabric also in Polarfleece®, flannel, wool and wool types, cotton types

Size	XS	S	M	L	XL	
Finished Length of Poncho at Center Back [Center Front is 2" (5 cm) Shorter]						
View A & B	32 3/4 (83)	33 3/4 (85)	34 3/4 (88)	35 3/4 (90)	36 3/4 (93)	" (cm)
Material Required: Fabric requirement allows for nap, one-way design or shading. Extra fabric may be needed to match design or for shrinkage.						
Fabric 60" (152 cm) Wide						
Fabric & Contrast Fabric each						
View A	2 3/8 (2.20)	2 1/2 (2.30)	2 5/8 (2.40)	2 3/4 (2.55)	3 (2.75)	yd (m)
View B	2 1/8 (1.95)	2 1/8 (1.95)	2 3/8 (2.20)	2 5/8 (2.40)	2 7/8 (2.65)	yd (m)
Fabric 45" (115 cm) Wide						
Fabric & Contrast Fabric each						
View A & B	3 (2.75)	3 1/4 (3.00)	3 3/8 (3.10)	3 1/2 (3.20)	3 3/4 (3.45)	yd (m)
Fusible interfacing 24" (60 cm) Wide						
View A & B	1/8 (0.15)	1/8 (0.15)	1/8 (0.15)	1/8 (0.15)	1/8 (0.15)	yd (m)

Notions: Thread, one drawstring, two 7" (18 cm) zippers, one separating zipper - 30" (75 cm) for sizes XS-S; 32" (80 cm) for sizes M-L-XL.
NOTE: If making poncho reversible, purchase reversible zipper.