



Women's loose fitting shirts have collar with collar stand, extended shoulders, yoke with forward shoulder seams, and tucks on back. View A has patch pockets with buttoned flaps, long sleeves with cuffs and shirt-tail hemline. View B has patch breast pocket, short sleeves and side hemline slits. Very close fitting leggings in two lengths have side seams and stitched elastic waist.

Shirt VIEW A Back



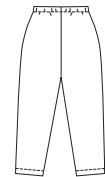
Shirt VIEW B Back



Leggings VIEW A



Leggings VIEW B



KWIK•SEW®
2835 price

PLUS SIZES

WOMEN'S SHIRTS & LEGGINGS

Sizes: 1X-2X-3X-4X

SHIRT DESIGNED FOR LIGHT TO MEDIUM WEIGHT WOVEN FABRICS

Suggested Fabrics: Shirtings, cotton, cotton types, linen, lightweight denim, chambray, challis

LEGGINGS DESIGNED FOR TWO-WAY STRETCH FABRIC WITH 75% STRETCH

Suggested Fabrics: Fabrics with spandex Lycra®, cotton Lycra®, stretch velvet

Size	1X	2X	3X	4X	
Finished Length of Shirt at Center Back					
View A & B	31 1/4 (79)	32 1/4 (82)	33 1/2 (85)	34 1/2 (88)	" (cm)
Finished Outside Leg Seam					
View A	36 (92)	36 1/2 (93)	37 1/4 (95)	38 (96)	" (cm)
View B	29 (74)	29 1/2 (75)	30 1/4 (77)	31 (79)	" (cm)
Material Required: Fabric requirement allows for nap, one-way design or shading. Extra fabric may be needed to match design or for shrinkage.					
Fabric 60" (152 cm) Wide					
Shirt View A	2 1/4 (2.10)	2 1/4 (2.10)	2 3/8 (2.20)	2 3/8 (2.20)	yd (m)
View B	1 7/8 (1.75)	2 (1.85)	2 1/8 (1.95)	2 1/4 (2.10)	yd (m)
Leggings View A	1 1/4 (1.15)	1 1/2 (1.40)	1 7/8 (1.75)	1 7/8 (1.75)	yd (m)
View B	1 1/8 (1.05)	1 3/8 (1.30)	1 1/2 (1.40)	1 1/2 (1.40)	yd (m)
Fabric 45" (115 cm) Wide					
Shirt View A	3 (2.75)	3 1/8 (2.85)	3 1/4 (3.00)	3 3/8 (3.10)	yd (m)
View B	2 3/4 (2.55)	2 7/8 (2.65)	2 7/8 (2.65)	2 7/8 (2.65)	yd (m)
Fusible Interfacing 24" (60 cm) Wide					
Shirt View A & B	7/8 (0.80)	1 (0.95)	1 (0.95)	1 (0.95)	yd (m)

Notions: Thread. VIEW A Shirt: Ten 5/8" (15 mm) buttons. VIEW B Shirt: Six 5/8" (15 mm) buttons.
 Leggings: 1" (2.5 cm) wide elastic - 1 yd (0.95 m) for sizes 1X-2X; 1 1/4 yd (1.15 m) for sizes 3X-4X.