

PLUS SIZE



A

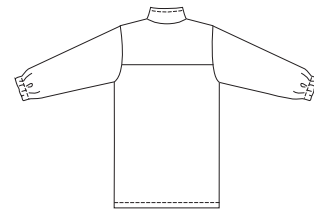


B

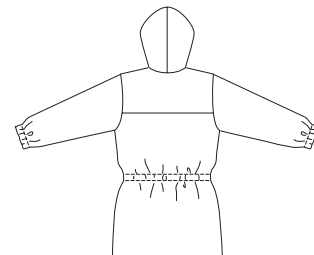


Women's jackets have zipper front, extended shoulders, front and back yokes, zipper pockets on front, and elastic in casing at bottom edges of sleeves. View A is unlined, with contrast collar. View B is lined, has hood and drawstring in casing at waist.

VIEW A Back



VIEW B Back



**KWIK•SEW®**  
**2839** price

**PLUS SIZES**

**WOMEN'S JACKETS**  
 Sizes: 1X-2X-3X-4X

DESIGNED FOR HEAVYWEIGHT STRETCH KNITS

Suggested Fabrics: Polarfleece®, berber fleece, blanket fleece

Lining in lightweight woven and knit fabric such as flannel, single knit, cotton, cotton types

Size	1X	2X	3X	4X	
<b>Finished Length of Jacket at Center Back</b>					
View A & B	33 (84)	34 (86)	34 3/4 (88)	35 1/2 (90)	" (cm)
<b>Material Required:</b> Fabric requirement allows for nap, one-way design or shading. Extra fabric may be needed to match design or for shrinkage.					
<b>Fabric 60" (152 cm) Wide</b>					
View A	2 (1.85)	2 3/8 (2.20)	2 3/8 (2.20)	2 3/8 (2.20)	yd (m)
View B	2 1/4 (2.10)	2 5/8 (2.40)	2 5/8 (2.40)	2 5/8 (2.40)	yd (m)
<b>Lining 60" (152 cm) Wide</b>					
View A	3/8 (0.35)	3/8 (0.35)	3/8 (0.35)	3/8 (0.35)	yd (m)
View B	2 1/2 (2.30)	2 5/8 (2.40)	2 5/8 (2.40)	2 5/8 (2.40)	yd (m)
<b>Lining 45" (115 cm) Wide</b>					
View A	3/8 (0.35)	3/8 (0.35)	3/8 (0.35)	3/8 (0.35)	yd (m)
View B	3 5/8 (3.35)	3 5/8 (3.35)	3 5/8 (3.35)	3 3/4 (3.45)	yd (m)
<b>Contrast Fabric 36" (90 cm) Wide - minimum width</b>					
View A	3/8 (0.35)	3/8 (0.35)	3/8 (0.35)	3/8 (0.35)	yd (m)

**Notions:** Thread. One separating zipper – 34" (86 cm) for sizes 1X; 36" (91 cm) for sizes 2X-3X-4X, two 7" (18 cm) zippers, scrap piece of fusible interfacing, 5/8 yd (0.60 m) of 3/4" (2 cm) wide elastic. VIEW B: One drawstring, two cord locks (optional).