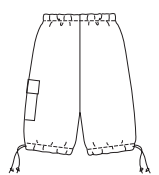




VIEW A Back



VIEW B Back



PANTS

Misses' pull-on pants and shorts have side pockets, elastic waist with drawstring and eyelets. View A has tucks on fronts at knees and one welt pocket on back with Velcro® closure, drawstrings in casing with eyelets on bottom edges of legs and tabs with buttons on outside and inside leg seams, allowing pants to be rolled up. View B shorts have patch pocket with flap and Velcro® closure on left side, drawstrings in casing with eyelets at bottom edges of legs and drawstrings tie at outside leg seams.

KWIK•SEW®
price **2841**

DESIGNED FOR LIGHT TO MEDIUM WEIGHT WOVEN FABRICS

Suggested Fabrics: Windbreaker fabric, supplex, nylon, cotton, cotton blends, twill, chino

MISSES' PANTS & SHORTS
Sizes: XS-S-M-L-XL

Size	XS	S	M	L	XL
Finished Inside Leg Seam					
View A	29 1/2" (75 cm) - All Sizes				
View B	9 1/2" (24 cm) - All Sizes				
Material Required: Fabric requirement allows for nap, one-way design or shading. Extra fabric may be needed to match design or for shrinkage.					
Fabric 60" (152 cm) Wide					
View A	1 5/8 (1.50)	1 3/4 (1.60)	2 1/4 (2.10)	2 1/4 (2.10)	2 3/8 (2.20)
View B	1 1/8 (1.05)	1 1/8 (1.05)	1 1/8 (1.05)	1 1/4 (1.15)	1 3/8 (1.30)
Fabric 45" (115 cm) Wide					
View A	2 1/2 (2.30)	2 5/8 (2.40)	2 5/8 (2.40)	2 3/4 (2.55)	2 3/4 (2.55)
View B	1 3/4 (1.60)	1 3/4 (1.60)	1 7/8 (1.75)	1 7/8 (1.75)	1 7/8 (1.75)
Fusible Interfacing 24" (60 cm) Wide					
View A or B	1/4 (0.25)	1/4 (0.25)	1/4 (0.25)	1/4 (0.25)	1/4 (0.25)
Notions: Thread, 3/4" (2 cm) wide elastic - 3/4 yd (0.70 m) for sizes XS - S; 1 yd (0.95 m) for sizes M - L; 1 1/8 yd (1.05 m) for size XL. Six eyelets, three drawstrings. VIEW A: Four 1/2" (13 mm) buttons, 1" (2.5 cm) of 5/8" (15 mm) wide Velcro®. VIEW B: 2" (5 cm) of 5/8" (15 mm) wide Velcro®.					