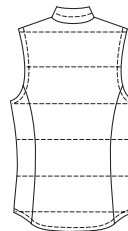


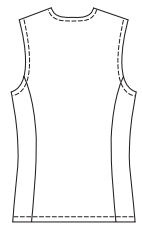


Misses' lined vests have zipper front, princess seams and pockets in princess seams on front. View A is quilted with lightweight polyester fleece, has stand-up collar and shaped hemline. View B has round neckline.

VIEW A Back



VIEW B Back



JACKETS

KWIK·SEW®
price **2843**

DESIGNED FOR LIGHT TO MEDIUM WEIGHT WOVEN FABRICS

Suggested Fabrics: Nylon, windbreaker type fabrics, supplex, twill, poplin, flannel

NOTE: Lightweight quilted fabric can also be used

MISSES' VESTS
Sizes: XS-S-M-L-XL

Size	XS	S	M	L	XL	
Finished Length at Center Back (View A is shorter in front)						
View A or B	22 1/4 (56)	23 (58)	23 3/4 (60)	24 1/4 (62)	25 (63)	" (cm)
Material Required: Fabric requirement allows for nap, one-way design or shading. Extra fabric may be needed to match design or for shrinkage.						
Fabric 60" (152 cm) Wide						
View A	1 3/8 (1.30)	1 3/8 (1.30)	1 3/8 (1.30)	1 3/8 (1.30)	1 1/2 (1.40)	yd (m)
View B	1 (0.95)	1 1/8 (1.05)	1 1/8 (1.05)	1 1/8 (1.05)	1 1/8 (1.05)	yd (m)
Lining						
View A or B	3/4 (0.70)	3/4 (0.70)	3/4 (0.70)	7/8 (0.80)	7/8 (0.80)	yd (m)
* Polyester Fleece						
View A	1 3/8 (1.30)	1 3/8 (1.30)	1 3/8 (1.30)	1 3/8 (1.30)	1 1/2 (1.40)	yd (m)
Fabric 45" (115 cm) Wide						
View A	1 3/4 (1.60)	1 3/4 (1.60)	1 3/4 (1.60)	1 3/4 (1.60)	1 7/8 (1.75)	yd (m)
View B	1 1/4 (1.15)	1 1/4 (1.15)	1 3/8 (1.30)	1 3/8 (1.30)	1 3/8 (1.30)	yd (m)
Lining						
View A	3/4 (0.70)	1 1/8 (1.05)	1 1/4 (1.15)	1 1/4 (1.15)	1 1/4 (1.15)	yd (m)
View B	3/4 (0.70)	1 1/4 (1.15)	1 1/4 (1.15)	1 3/8 (1.30)	1 3/8 (1.30)	yd (m)
* Polyester Fleece						
View A	1 3/4 (1.60)	1 3/4 (1.60)	1 3/4 (1.60)	1 3/4 (1.60)	1 7/8 (1.75)	yd (m)

* Eliminate if using pre-quilted fabric

Notions: Thread. VIEW A: One separating zipper - 20" (50 cm) for sizes XS - S; 22" (55 cm) for sizes M - L - XL. VIEW B: One separating zipper - 22" (55 cm) for sizes XS - S; 24" (60 cm) for sizes M - L - XL. NOTE: Purchase suggested length of zipper or longer (zipper will be trimmed).