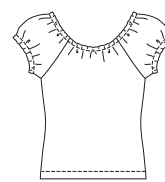


Misses' tops. View A and B sleeveless, tank style tops have hemmed armholes, and neckline has ribbing in casing that gathers front neckline. View B has empire waist on front with elastic in casing. View C has very short raglan sleeves and elastic in casings at neckline and armholes.

VIEW A & B Back

VIEW C Back



# KWIK & EASY

**KWIK•SEW®**  
price **2845**

DESIGNED FOR STRETCH KNITS ONLY WITH 25% STRETCH ACROSS THE GRAIN  
Suggested Fabrics: Interlock, textured knits, pointelle jersey, stretch velour, stretch terry, thermal knits

**MISSSES' TOPS**  
Sizes: XS-S-M-L-XL

Size	XS	S	M	L	XL	
<b>Finished Length at Center Back from Natural Neckline</b>						" (cm)
View A, B & C	20 (51)	21 (53)	21 3/4 (55)	22 1/4 (57)	23 (59)	
<b>Material Required:</b> Fabric requirement allows for nap, one-way design or shading. Extra fabric may be needed to match design or for shrinkage.						
<b>Fabric 60" (152 cm) Wide</b>						
View A	3/4 (0.70)	3/4 (0.70)	3/4 (0.70)	3/4 (0.70)	3/4 (0.70)	yd (m)
View B	3/4 (0.70)	3/4 (0.70)	3/4 (0.70)	3/4 (0.70)	1 (0.95)	yd (m)
View C	7/8 (0.80)	7/8 (0.80)	7/8 (0.80)	1 (0.95)	1 (0.95)	yd (m)
<b>Notions:</b> Thread. VIEW A: 1 1/2 yd (1.40 m) of 1/8" - 1/4" (3 mm - 6 mm) wide ribbon. VIEW B: 1 1/2 yd (1.40 m) of 1/8" - 1/4" (3 mm - 6mm) wide ribbon, 5/8 yd (0.60 m) of 1/4" (6 mm) wide elastic. VIEW C: 2 1/4 yd (2.10 m) of 1/4" (6 mm) wide elastic.						