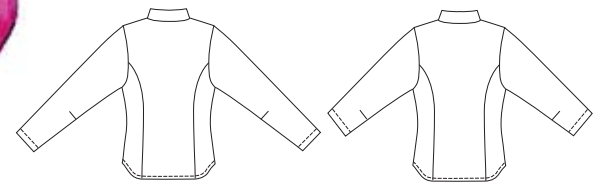




Misses' semi-fitted blouse has princess seams on front and back, shirt tail hemline, collar with collar stand. View A has hidden button placket, full-length sleeves and pocket on left sleeve. View B has hidden button placket and three-quarter length sleeves. View C has buttoned front and elbow length sleeves with buttoned cuffs.

VIEW A Back

VIEW B Back



VIEW C Back



**KWIK•SEW®**

price **2849**

**DESIGNED FOR LIGHTWEIGHT WOVEN FABRICS**

Suggested Fabrics: Cotton, cotton types, silk, linen, broadcloth, chambray

**MISSSES' BLOUSES**

Sizes: XS-S-M-L-XL

Size	XS	S	M	L	XL	
<b>Finished Length at Center Back</b>						" (cm)
View A, B & C	22 3/4 (58)	23 1/2 (60)	24 1/4 (62)	25 (64)	25 3/4 (66)	
<b>Material Required:</b> Fabric requirement allows for nap, one-way design or shading. Extra fabric may be needed to match design or for shrinkage.						
<b>Fabric 60" (152 cm) Wide</b>						yd (m)
View A	1 1/2 (1.40)	1 1/2 (1.40)	1 1/2 (1.40)	1 1/2 (1.40)	1 5/8 (1.50)	
View B	1 3/8 (1.30)	1 3/8 (1.30)	1 3/8 (1.30)	1 3/8 (1.30)	1 5/8 (1.50)	
View C	1 1/4 (1.15)	1 3/8 (1.30)	1 3/8 (1.30)	1 3/8 (1.30)	1 1/2 (1.40)	
<b>Fabric 45" (115 cm) Wide</b>						yd (m)
View A	2 (1.85)	2 (1.85)	2 (1.85)	2 1/8 (1.95)	2 1/8 (1.95)	
View B	1 3/4 (1.60)	1 7/8 (1.75)	1 7/8 (1.75)	2 (1.85)	2 (1.85)	
View C	1 5/8 (1.50)	1 5/8 (1.50)	1 5/8 (1.50)	1 3/4 (1.60)	1 7/8 (1.75)	
<b>Fusible Interfacing 24" (60 cm) Wide</b>						yd (m)
View A, B & C	5/8 (0.60)	3/4 (0.70)	3/4 (0.70)	3/4 (0.70)	3/4 (0.70)	
<b>Notions:</b> Thread. VIEW A & B: Six 5/8" (15 mm) buttons. VIEW C: Eight 5/8" (15 mm) buttons.						