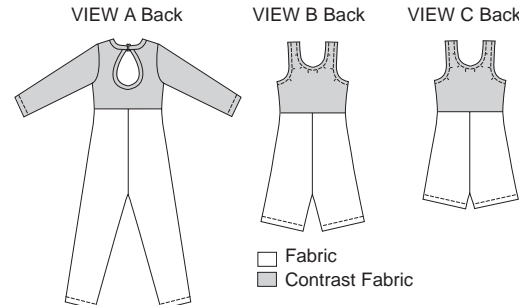




Girls' very close fitting unitards have empire waist with contrast fabric bodice. View A has full length legs, long sleeves, round neckline, keyhole opening on back; neckline is finished with self fabric binding and has hook closure on back neckline. View B and C have tank style bodice and neckline and armholes finished with elastics. View B has above knee length legs. View C has short legs.



# KWIK & EASY

**KWIK•SEW®**  
**2852**  
price **2853**

**DESIGNED FOR TWO-WAY STRETCH FABRICS WITH 75% STRETCH**  
Suggested Fabrics: Cotton Lycra®, nylon Lycra®, swimwear fabric, stretch velvet

**GIRLS' UNITARDS**  
2852 Sizes: 4-5-6-7  
2853 Sizes: 8-10-12-14

| Size  | 4           | 5           | 6           | 7           | 8            | 10           | 12           | 14           |        |
|---|-------------|-------------|-------------|-------------|--------------|--------------|--------------|--------------|--------|
| <b>Inside Leg to Floor</b>  | 15 3/4 (40) | 17 1/2 (44) | 19 1/2 (49) | 20 1/2 (52) | 22 (56)      | 24 (61)      | 26 (66)      | 28 (71)      | " (cm) |
| <b>Material Required:</b> Fabric requirement allows for nap, one-way design or shading. Extra fabric may be needed to match design or for shrinkage.                      |             |             |             |             |              |              |              |              |        |
| <b>Fabric 60" (152 cm) Wide with Greatest Degree of Stretch on Crosswise Grain</b>  |             |             |             |             |              |              |              |              |        |
| View A Fabric   | 7/8 (0.80)  | 7/8 (0.80)  | 1 (0.95)    | 1 (0.95)    | 1 (0.95)     | 1 1/8 (1.05) | 1 1/8 (1.05) | 1 1/8 (1.05) | yd (m) |
| Contrast Fabric   | 1/2 (0.50)  | 1/2 (0.50)  | 5/8 (0.60)  | 5/8 (0.60)  | 5/8 (0.60)   | 5/8 (0.60)   | 3/4 (0.70)   | 3/4 (0.70)   | yd (m) |
| View B Fabric   | 1/2 (0.50)  | 1/2 (0.50)  | 5/8 (0.60)  | 5/8 (0.60)  | 5/8 (0.60)   | 5/8 (0.60)   | 3/4 (0.70)   | 3/4 (0.70)   | yd (m) |
| Contrast Fabric   | 3/8 (0.35)  | 3/8 (0.35)  | 3/8 (0.35)  | 3/8 (0.35)  | 3/8 (0.35)   | 3/8 (0.35)   | 3/8 (0.35)   | 3/8 (0.35)   | yd (m) |
| View C Fabric   | 3/8 (0.35)  | 1/2 (0.50)  | 1/2 (0.50)  | 1/2 (0.50)  | 1/2 (0.50)   | 1/2 (0.50)   | 5/8 (0.60)   | 5/8 (0.60)   | yd (m) |
| Contrast Fabric   | 3/8 (0.35)  | 3/8 (0.35)  | 3/8 (0.35)  | 3/8 (0.35)  | 3/8 (0.35)   | 3/8 (0.35)   | 3/8 (0.35)   | 3/8 (0.35)   | yd (m) |
| <b>Fabric 45" (115 cm) Wide with Greatest Degree of Stretch on Lengthwise Grain</b>   |             |             |             |             |              |              |              |              |        |
| View A Fabric   | 1 (0.95)    | 1 (0.95)    | 1 (0.95)    | 1 (0.95)    | 1 1/8 (1.05) | 1 1/8 (1.05) | 1 1/4 (1.15) | 1 1/4 (1.15) | yd (m) |
| Contrast Fabric   | 5/8 (0.60)  | 3/4 (0.70)  | 3/4 (0.70)  | 3/4 (0.70)  | 3/4 (0.70)   | 7/8 (0.80)   | 1 1/8 (1.05) | 1 1/8 (1.05) | yd (m) |
| View B Fabric   | 1/2 (0.50)  | 1/2 (0.50)  | 1/2 (0.50)  | 1/2 (0.50)  | 5/8 (0.60)   | 5/8 (0.60)   | 5/8 (0.60)   | 1 1/4 (1.15) | yd (m) |
| Contrast Fabric   | 3/8 (0.35)  | 3/8 (0.35)  | 3/8 (0.35)  | 1/2 (0.50)  | 1/2 (0.50)   | 1/2 (0.50)   | 1/2 (0.50)   | 1/2 (0.50)   | yd (m) |
| View C Fabric   | 1/2 (0.50)  | 1/2 (0.50)  | 1/2 (0.50)  | 1/2 (0.50)  | 5/8 (0.60)   | 5/8 (0.60)   | 5/8 (0.60)   | 5/8 (0.60)   | yd (m) |
| Contrast Fabric   | 3/8 (0.35)  | 3/8 (0.35)  | 3/8 (0.35)  | 1/2 (0.50)  | 1/2 (0.50)   | 1/2 (0.50)   | 1/2 (0.50)   | 1/2 (0.50)   | yd (m) |
| <b>Notions:</b> Thread. VIEW A: One 3/8" (1 cm) wide swimwear hook. VIEW B & C: 3/8" (1 cm) wide elastic – 1 1/2 yd (1.40 m) for sizes 4-7; 2 yd (1.80 m) for sizes 8-14. |             |             |             |             |              |              |              |              |        |