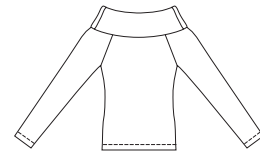




Misses' close fitting tops have raglan sleeves and wide collars that can be worn draped or pulled down over shoulders. View A has long sleeves, collar is double and has seams at shoulders. View B has single layer shaped collar. View C has a straight folded down collar. View B and C have three quarter length sleeves.

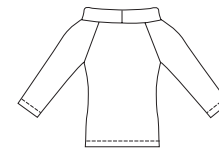
VIEW A Back



VIEW B Back



VIEW C Back



KWIK•SEW®
2856 price

KWIK & EASY

MISSES' TOPS
 Sizes: XS-S-M-L-XL

DESIGNED FOR STRETCH KNITS ONLY WITH 35% STRETCH ACROSS THE GRAIN
 Suggested Fabrics: Interlock, textured knits, stretch velvet, stretch velour, fabric with Lycra® spandex, cotton Lycra®

Size	XS	S	M	L	XL	
Finished Length at Center Back from Natural Neckline	21 3/4 (55)	22 1/4 (56)	22 3/4 (58)	23 1/2 (59)	24 (61)	" (cm)
Material Required: Fabric requirement allows for nap, one-way design or shading. Extra fabric may be needed to match design or for shrinkage.						
Fabric 60" (152 cm) Wide						
View A	1 3/4 (1.60)	1 3/4 (1.60)	1 3/4 (1.60)	1 3/4 (1.60)	1 3/4 (1.60)	yd (m)
View B	1 1/2 (1.40)	1 5/8 (1.50)	1 5/8 (1.50)	1 3/4 (1.60)	1 3/4 (1.60)	yd (m)
View C	1 1/2 (1.40)	1 1/2 (1.40)	1 5/8 (1.50)	1 3/4 (1.60)	1 3/4 (1.60)	yd (m)
Notions: Thread, 1 yd (0.95 m) of 3/8" (10 mm) wide clear elastic.						