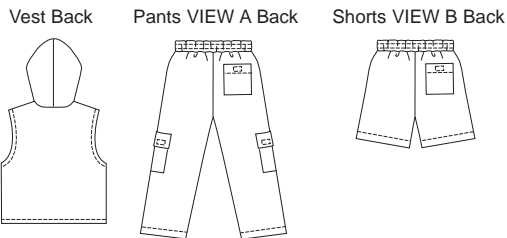




BABY & TODDLER

Toddlers' pants, shorts and vest. Pull-on pants and shorts have front pockets, back patch pocket with Velcro® closure and waistband with stitched elastic. View A pants have leg pockets with flaps and Velcro® closures. Lined vest has hood, zipper front and patch pockets with Velcro® closures.



KWIK•SEW®
price **2858**

DESIGNED FOR MEDIUM WEIGHT WOVEN FABRICS

Suggested Fabrics: Cotton, cotton types, twill, chino, linen, lightweight denim, baby corduroy
Lining: Lightweight knit and woven fabrics such as lightweight Polarfleece®, cotton, flannel, single knit

TODDLERS' PANTS, SHORTS & VEST
Sizes: T1-T2-T3-T4

| Size | T1 | T2 | T3 | T4 | |
|---|--------------|--------------|--------------|--------------|--------|
| Finished Length of Vest at Center Back | 12 (30) | 12 3/4 (32) | 13 1/2 (34) | 14 1/4 (36) | " (cm) |
| Finished Inside Leg Seam | | | | | |
| Pants View A | 10 (25) | 11 1/2 (29) | 13 (33) | 14 1/2 (36) | " (cm) |
| Shorts View B | 2 1/4 (6) | 2 3/4 (7) | 3 1/4 (8.5) | 3 3/4 (9.5) | " (cm) |
| Material Required: Fabric requirement allows for nap, one-way design or shading. Extra fabric may be needed to match design or for shrinkage. | | | | | |
| Fabric 60" (152 cm) Wide | | | | | |
| Pants & Vest | 1 1/8 (1.05) | 1 1/8 (1.05) | 1 1/4 (1.15) | 1 1/4 (1.15) | yd (m) |
| Pants View A | 3/4 (0.70) | 3/4 (0.70) | 7/8 (0.80) | 7/8 (0.80) | yd (m) |
| Shorts View B | 1/2 (0.50) | 1/2 (0.50) | 1/2 (0.50) | 5/8 (0.60) | yd (m) |
| Fabric 45" (115 cm) Wide | | | | | |
| Pants & Vest | 1 1/2 (1.40) | 1 1/2 (1.40) | 1 5/8 (1.50) | 1 5/8 (1.50) | yd (m) |
| Pants View A | 7/8 (0.80) | 1 (0.95) | 1 (0.95) | 1 1/8 (1.05) | yd (m) |
| Shorts View B | 3/4 (0.70) | 3/4 (0.70) | 3/4 (0.70) | 3/4 (0.70) | yd (m) |
| Lining 60" (152 cm) Wide | | | | | |
| Vest | 1/2 (0.50) | 1/2 (0.50) | 1/2 (0.50) | 1/2 (0.50) | yd (m) |
| Lining 45" (115 cm) Wide | | | | | |
| Vest | 5/8 (0.60) | 5/8 (0.60) | 3/4 (0.70) | 3/4 (0.70) | yd (m) |
| Fusible Interfacing 24" (60 cm) Wide | | | | | |
| Vest & Pants | 1/4 (0.25) | 1/4 (0.25) | 1/4 (0.25) | 1/4 (0.25) | yd (m) |
| Pants View A & Shorts View B | 1/8 (0.15) | 1/8 (0.15) | 1/8 (0.15) | 1/8 (0.15) | yd (m) |
| Notions: Thread, 5/8 yd (0.60 m) of 1" (2.5 cm) wide elastic. Pants & Vest: 8" (20 cm) of 5/8" (1.5 cm) wide Velcro®, one separating zipper – 12" (30 cm) for sizes T1-T2; 14" (35 cm) for sizes T3-T4. NOTE: Purchase suggested length of zipper or longer, zipper will be trimmed. Pants VIEW A: 6" (15 cm) of 5/8" (1.5 cm) wide Velcro®. Shorts VIEW B: 1" (2.5 cm) of 5/8" (1.5 cm) wide Velcro®. | | | | | |