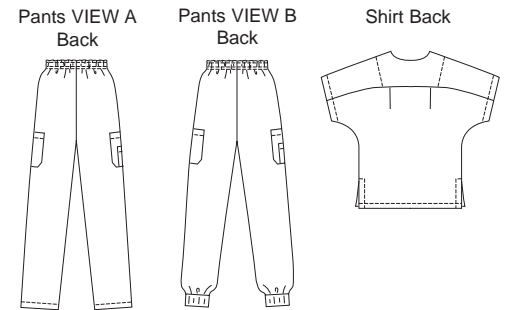




MEN'S

Men's scrubs. Pull-over shirt has V-neckline, front and back extended to form sleeves, back yoke, three patch pockets on front, and side hemline slits. Pull-on pants have stitched elastic waist with drawstring, deep side pockets and optional patch pockets on sides of legs. View A has hemmed legs and View B has ribbing cuffs.



**KWIK-SEW®**

price **2861**

**DESIGNED FOR WOVEN FABRICS**

Suggested Fabrics: Cotton, cotton types, poplin, broadcloth, twill, calicos

**MEN'S SCRUBS**

Sizes: S-M-L-XL-XXL

Size	S	M	L	XL	XXL	
<b>Finished Length of Shirt at Center Back</b>	29 1/2 (74)	30 1/2 (77)	31 1/2 (80)	32 1/2 (82)	33 1/2 (85)	" (cm)
<b>Finished Inside Leg Seam</b>						
View A or B	31 (79)	31 (79)	31 (79)	31 (79)	31 (79)	" (cm)
<b>Material Required:</b>	Fabric requirement allows for nap, one-way design or shading. Extra fabric may be needed to match design or for shrinkage.					
<b>Fabric 60" (152 cm) Wide</b>						
Shirt	1 7/8 (1.75)	2 (1.85)	2 (1.85)	2 1/8 (1.95)	2 1/8 (1.95)	yd (m)
Pants View A	2 (1.85)	2 1/4 (2.10)	2 3/8 (2.20)	2 1/2 (2.30)	2 5/8 (2.40)	yd (m)
Pants View B	1 7/8 (1.75)	2 1/8 (1.95)	2 1/4 (2.10)	2 1/4 (2.10)	2 3/8 (2.20)	yd (m)
<b>Fabric 45" (115 cm) Wide</b>						
Shirt	2 1/8 (1.95)	2 1/4 (2.10)	2 1/4 (2.10)	2 3/8 (2.20)	2 1/2 (2.30)	yd (m)
Pants View A	2 3/4 (2.55)	2 3/4 (2.55)	2 7/8 (2.65)	2 7/8 (2.65)	3 (2.75)	yd (m)
Pants View B	2 5/8 (2.40)	2 5/8 (2.40)	2 5/8 (2.40)	2 5/8 (2.40)	2 3/4 (2.55)	yd (m)
<b>Fusible Interfacing 24" (60 cm) Wide</b>						
Shirt	1/8 (0.15)	1/8 (0.15)	1/8 (0.15)	1/8 (0.15)	1/8 (0.15)	yd (m)
Pants View A or B	1/8 (0.15)	1/8 (0.15)	1/8 (0.15)	1/8 (0.15)	1/8 (0.15)	yd (m)
<b>Ribbing 28" (70 cm) Wide</b>						
Pants View B	6 (15)	6 (15)	6 (15)	6 (15)	6 (15)	" (cm)

**Notions:** Thread. Pants: 2" (5 cm) wide elastic - 1 yd (0.90 m) for sizes S-M-L-XL; 1 1/8 yd (1 m) for size XXL, one drawstring.