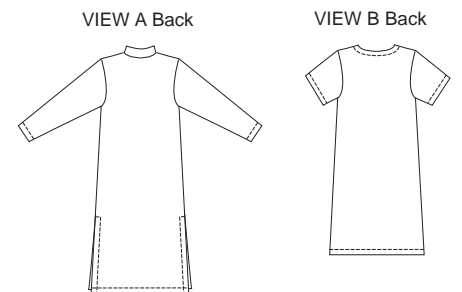




Women's robes have front patch pockets. View A pull-on robe has stand-up collar, zipper on front, side hemline slits and full length sleeves. View B has short sleeves, V-neck and fronts with facings and button closure.



PLUS SIZE

PLUS SIZES

KWIK•SEW®
price **2862**

DESIGNED FOR WOVEN AND FIRM KNIT FABRICS

Suggested Fabrics: Robe velour, chenille, terry cloth, sweatshirt fleece, French terry, single knit, lightweight Polarfleece®

WOMEN'S ROBES
Sizes: 1X-2X-3X-4X

Size	1X	2X	3X	4X	
Finished Length at Center Back from Neckline					
View A	54 (137)	54 1/2 (138)	55 (140)	55 1/2 (141)	" (cm)
View B	46 (117)	46 1/2 (118)	47 (119)	47 1/2 (120)	" (cm)
Material Required: Fabric requirement allows for nap, one-way design or shading. Extra fabric may be needed to match design or for shrinkage.					
Fabric 60" (152 cm) Wide					
View A	3 (2.75)	3 1/8 (2.85)	3 1/4 (3.00)	4 (3.70)	yd (m)
View B	2 7/8 (2.65)	2 7/8 (2.65)	2 7/8 (2.65)	3 1/4 (3.00)	yd (m)
Fabric 45" (115 cm) Wide					
View A	4 (3.70)	4 1/4 (3.90)	4 3/8 (4.00)	4 1/2 (4.15)	yd (m)
View B	3 1/8 (2.85)	3 1/2 (3.20)	3 1/2 (3.20)	3 5/8 (3.35)	yd (m)
Fusible Interfacing 24" (60 cm) Wide					
View A	1/8 (0.15)	1/8 (0.15)	1/8 (0.15)	1/8 (0.15)	yd (m)
View B	1 1/2 (1.40)	1 1/2 (1.40)	1 1/2 (1.40)	1 1/2 (1.40)	yd (m)
Notions: Thread. VIEW A: One 24" (60 cm) zipper. VIEW B: Five 3/4" (20 mm) buttons.					