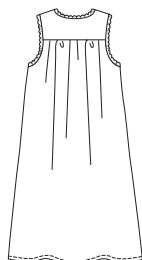
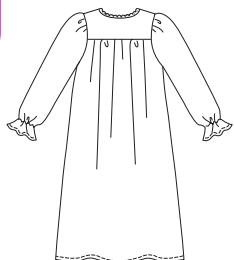


Women's nightgowns have front and back gathered to yoke. View A has V-neckline finished with lace and gathered full length sleeves. View B has armholes and scoop neckline finished with lace.

PLUS SIZE

VIEW A Back

VIEW B Back



KWIK•SEW®
2863 price

PLUS SIZES

WOMEN'S NIGHTGOWNS

DESIGNED FOR LIGHTWEIGHT SOFT WOVEN AND KNIT FABRICS

Sizes: 1X-2X-3X-4X

Suggested Fabrics: Nylon tricot, single knit, brushed nylon, cotton, cotton types, broadcloth, batiste, silk, silk like fabrics

Size	1X	2X	3X	4X	
Finished Length at Center Back from Neckline					" (cm)
View A & B	43 (108)	44 (112)	45 (114)	46 (117)	
Material Required:	Fabric requirement allows for nap, one-way design or shading. Extra fabric may be needed to match design or for shrinkage.				
Fabric 60" (152 cm) Wide					
View A	2 1/4 (2.10)	2 1/4 (2.10)	3 3/8 (3.10)	3 3/8 (3.10)	yd (m)
View B	2 1/4 (2.10)	2 1/4 (2.10)	2 5/8 (2.40)	2 3/4 (2.55)	yd (m)
Fabric 45" (115 cm) Wide					
View A	4 (3.70)	4 (3.70)	4 1/8 (3.80)	4 1/8 (3.80)	yd (m)
View B	2 1/2 (2.30)	2 5/8 (2.40)	2 5/8 (2.40)	2 3/4 (2.55)	yd (m)
Notions:	Thread. VIEW A: 5/8 yd (0.60 m) of 1/8" (3 mm) wide elastic, 1 1/8 yd (1.05 m) of 3/8" - 3/4" (1 cm - 2 cm) wide lace, 3/4 yd (0.70 m) of 1/4" (6 mm) wide ribbon for bow (optional). VIEW B: 2 7/8 yd (2.65 m) of 3/8" - 3/4" (1 cm - 2 cm) wide lace.				