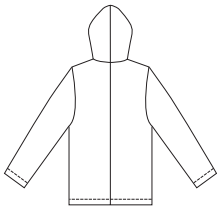


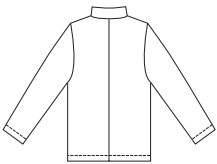


Women's jackets have front princess seams and front zipper. View A has pockets in princess seams and hood with drawstring. View B has pockets in princess seams and stand-up collar. View C has hood with drawstring at bottom edge.

VIEW A Back



VIEW B Back



VIEW C Back



PLUS SIZE

KWIK·SEW®
2865 price

PLUS SIZES

WOMEN'S JACKETS
 Sizes: 1X-2X-3X-4X

DESIGNED FOR WOVEN AND FIRM KNIT FABRICS

Suggested Fabrics: Linen, cotton, cotton types, gabardine, silk, rayon blends, double knit, sweatshirt fleece, French terry

Size	1X	2X	3X	4X	
Finished Length at Center Back					
View A or B	29 1/2 (75)	30 1/2 (77)	31 1/2 (80)	32 1/2 (82)	" (cm)
View C	24 1/2 (62)	25 1/2 (65)	26 1/2 (67)	27 1/2 (70)	" (cm)
Material Required:	Fabric requirement allows for nap, one-way design or shading. Extra fabric may be needed to match design or for shrinkage.				
Fabric 60" (152 cm) Wide					
View A	2 5/8 (2.40)	2 3/4 (2.55)	2 3/4 (2.55)	2 7/8 (2.65)	yd (m)
View B	2 1/2 (2.30)	2 5/8 (2.40)	2 5/8 (2.40)	2 3/4 (2.55)	yd (m)
View C	1 3/4 (1.60)	1 3/4 (1.60)	1 7/8 (1.75)	1 7/8 (1.75)	yd (m)
Fabric 45" (115 cm) Wide					
View A	3 1/8 (2.85)	3 1/4 (3.00)	3 3/8 (3.10)	3 5/8 (3.35)	yd (m)
View B	3 1/4 (3.00)	3 1/4 (3.00)	3 3/8 (3.10)	3 1/2 (3.20)	yd (m)
View C	2 1/4 (2.10)	2 3/8 (2.20)	2 1/2 (2.30)	2 5/8 (2.40)	yd (m)

Notions: Thread. VIEW A: One drawstring, one separating zipper - 24" (60 cm) for size 1X; 26" (65 cm) for sizes 2X-3X; 28" (70 cm) for size 4X.
 VIEW B: One separating zipper - 28" (70 cm) for sizes 1X-2X; 30" (75 cm) for sizes 3X-4X.
 VIEW C: Two drawstrings, one separating zipper - 20" (50 cm) for sizes 1X-2X; 22" (55 cm) for sizes 3X-4X.