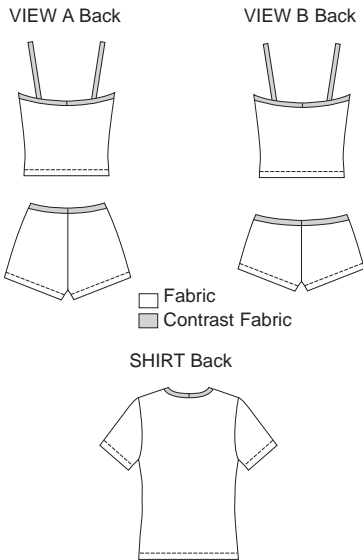


Misses' tankini and shirt. Tankini has shelf bra lining with elastic and contrast bindings with elastic at top edges and shoulder straps. Boy cut panties have partial lining on front, waist is finished with contrast binding with elastic, leg openings finished with elastic, and View B are low cut. Shirt has short sleeves and V-neckline finished with contrast binding.



**KWIK•SEW®**  
**2868** price

**MISSSES' TANKINI & SHIRT** DESIGNED FOR TWO-WAY STRETCH FABRIC WITH 75% STRETCH  
 Sizes: XS-S-M-L-XL Suggested Fabrics: Swimwear fabric with spandex Lycra®

| Size   | XS           | S            | M            | L            | XL           |        |
|--|--------------|--------------|--------------|--------------|--------------|--------|
| <b>Finished Length of Shirt at Center Back</b>   | 21 (53)      | 21 1/2 (55)  | 22 1/4 (56)  | 22 3/4 (57)  | 23 1/4 (59)  | " (cm) |
| <b>Material Required:</b> Fabric requirement allows for nap, one-way design or shading. Extra fabric may be needed to match design or for shrinkage.   |              |              |              |              |              |        |
| <b>Fabric 60" (152 cm) Wide</b>  |              |              |              |              |              |        |
| View A or B  | 1 (0.95)     | 1 1/8 (1.05) | 1 1/8 (1.05) | 1 1/4 (1.15) | 1 1/4 (1.15) | yd (m) |
| Contrast   | 1/8 (0.15)   | 1/8 (0.15)   | 1/4 (0.25)   | 1/4 (0.25)   | 1/4 (0.25)   | yd (m) |
| Shirt Fabric   | 7/8 (0.80)   | 1 (0.95)     | 1 (0.95)     | 1 (0.95)     | 1 1/4 (1.15) | yd (m) |
| <b>Fabric 45" (115 cm) Wide</b>  |              |              |              |              |              |        |
| View A or B  | 1 (0.95)     | 1 1/8 (1.05) | 1 1/8 (1.05) | 1 1/4 (1.15) | 1 1/4 (1.15) | yd (m) |
| Contrast   | 1/4 (0.25)   | 1/4 (0.25)   | 1/4 (0.25)   | 1/4 (0.25)   | 1/4 (0.25)   | yd (m) |
| Shirt Fabric   | 1 1/8 (1.05) | 1 1/4 (1.15) | 1 3/8 (1.30) | 1 3/8 (1.30) | 1 1/2 (1.40) | yd (m) |
| <b>Contrast Fabric 26" (65 cm) Wide (Minimum Width)</b>  |              |              |              |              |              |        |
| Shirt  | 1/8 (0.15)   | 1/8 (0.15)   | 1/8 (0.15)   | 1/8 (0.15)   | 1/8 (0.15)   | yd (m) |
| <b>Swimwear Lining 22" (56 cm) Wide (Minimum Width)</b>  |              |              |              |              |              |        |
| View A or B  | 5/8 (0.60)   | 5/8 (0.60)   | 5/8 (0.60)   | 3/4 (0.70)   | 3/4 (0.70)   | yd (m) |
| <b>Notions:</b> Thread. VIEW A or B: 3/8" (1 cm) wide swimwear elastic - 3 7/8 yd (3.55 m) for sizes XS - S; 4 1/2 yd (4.15 m) for sizes M - L; 4 3/4 yd (4.35 m) for size XL, 3/4" (2 cm) wide swimwear elastic - 1/2 yd (0.50 m) for sizes XS - S - M; 5/8 yd (0.60 m) for sizes L - XL. |              |              |              |              |              |        |