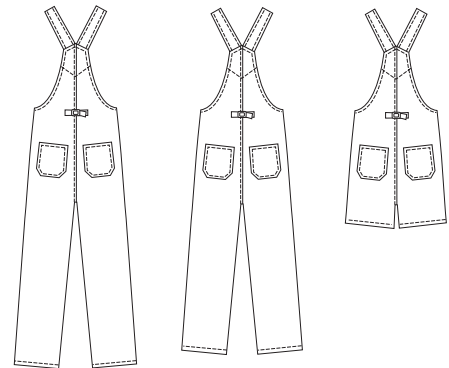




Misses' bib overalls in three lengths, have fake fly, front patch pockets, bib pocket, shoulder straps with buckles, side openings with button closures, back patch pockets and back belt with buckle.

VIEW A Back VIEW B Back VIEW C Back



KWIK•SEW®
2873 price

MISSES' OVERALLS DESIGNED FOR MEDIUM WEIGHT WOVEN FABRICS
 Sizes: XS-S-M-L-XL Suggested Fabrics: Cotton, cotton types, linen, twill, lightweight denim

Size	XS	S	M	L	XL	
Finished Inside Leg Seam						
View A	29 1/2" (75 cm) All Sizes					
View B	24 1/2" (62 cm) All Sizes					
View C	3 1/4" (8 cm) All Sizes					
Material Required: Fabric requirement allows for nap, one-way design or shading. Extra fabric may be needed to match design or for shrinkage.						
Fabric 60" (152 cm) Wide						
View A	2 1/4 (2.10)	2 1/4 (2.10)	2 3/8 (2.20)	2 3/8 (2.20)	2 1/2 (2.30)	yd (m)
View B	2 1/8 (1.95)	2 1/8 (1.95)	2 1/4 (2.10)	2 1/4 (2.10)	2 3/8 (2.20)	yd (m)
View C	1 1/2 (1.40)	1 5/8 (1.50)	1 5/8 (1.50)	1 3/4 (1.60)	1 7/8 (1.75)	yd (m)
Fabric 45" (115 cm) Wide						
View A	3 1/8 (2.85)	3 1/8 (2.85)	3 1/4 (3.00)	3 5/8 (3.35)	3 3/4 (3.45)	yd (m)
View B	2 7/8 (2.65)	2 7/8 (2.65)	3 (2.75)	3 3/8 (3.10)	3 1/2 (3.20)	yd (m)
View C	2 (1.85)	2 1/8 (1.95)	2 1/8 (1.95)	2 1/4 (2.10)	2 1/4 (2.10)	yd (m)
Fusible Interfacing 24" (60 cm) Wide						
Views A, B or C	1/4 (0.25)	1/4 (0.25)	1/4 (0.25)	1/4 (0.25)	1/4 (0.25)	yd (m)
Notions: Thread, one buckle set 1 3/4" (4.5 cm) wide, one 1" (2.5 cm) buckle, four 5/8" (15 mm) buttons or bachelor buttons.						